



**វិទ្យាស្ថានបណ្តុះបណ្តាល និង ស្រាវជ្រាវដើម្បីអភិវឌ្ឍន៍កម្ពុជា**  
**CDRI—Cambodia’s leading independent  
development policy research institute**

**របាយការណ៍ខ្លីៗស្តីពីសេដ្ឋកិច្ចកម្ពុជា**  
**Flash Report on the Cambodian Economy**

សីហា ២០១៣ / August 2013

វត្ត វឌ្ឍនា / Roth Vathana

ប៉ុន ដូរីណា / Pon Dorina

បកប្រែដោយ៖ យូ សិទ្ធិវិទូ និង ខេង សេង

**ភ្នំពេញ កម្ពុជា**

**Phnom Penh, Cambodia**

**TO SUBSCRIBE, PLEASE CONTACT:**

*Office address:* #56, Street 315, Tuol Kork, Phnom Penh, Cambodia; *postal address:* CDRI, PO Box 622 Phnom Penh, Cambodia;  
*tel:* (855-23) 881-384/881-701/881-916/883-603 ; *fax:* (855-23) 880-734 ; *email:* [pubs@cdri.org.kh](mailto:pubs@cdri.org.kh); *website:* <http://www.cdri.org.kh>

**ការបកស្រាយតារាងសំខាន់**

**Highlights**

របាយការណ៍នេះគូសរំលេចសូចនាករសេដ្ឋកិច្ចមួយចំនួនរបស់កម្ពុជា និងប្រទេសជាដៃគូពាណិជ្ជកម្ម ដោយមានប្រៀបធៀបតួលេខថ្មីៗជាមួយនឹងខែមុនៗ។

This report highlights a number of economic indicators of Cambodia and its partners. It compares recent figures with those of earlier periods.

នៅត្រីមាសទី២ ឆ្នាំ២០១៣ វិនិយោគគិតជាទ្រព្យសកម្មជាប់លាប់សរុបខាងឧស្សាហកម្ម អនុម័តដោយក្រុមប្រឹក្សាអភិវឌ្ឍន៍កម្ពុជា កើន ៨៨៧% ធៀបនឹងត្រីមាសមុន (៩៩៣,៦% ធៀបនឹងឆ្នាំមុន) ដល់ ១,៩ពាន់លានដុល្លារ ក្នុងនេះវិនិយោគខាងផ្នែកកាត់ដេរកើនខ្លាំងជាងគេ។

In the second quarter, total fixed asset investments in industry approved by the Council for the Development of Cambodia jumped by 887 percent from a quarter earlier (993.6 percent year on year) to USD1.9 bn, overwhelmingly in garments.

នៅខែមិថុនា ភ្ញៀវបរទេសមកដល់សរុបកើន ៣% ធៀបនឹងខែមុន (២០% ធៀបនឹងឆ្នាំមុន)។ ភ្ញៀវមកលំហែកើន ៤% (២៤% ធៀបនឹងឆ្នាំមុន) រីឯភ្ញៀវមកធ្វើជំនួញធ្លាក់ចុះ ៧% ប៉ុន្តែកើន ១៣% ធៀបនឹងឆ្នាំមុន ហើយភ្ញៀវផ្សេងៗទៀតធ្លាក់ចុះ ៥% (៧២% ធៀបនឹងឆ្នាំមុន)។

In June, total foreign visitor arrivals rose 3 percent from the preceding month (20 percent year on year). Holiday arrivals went up 4 percent (24 percent year on year), while business arrivals dropped by 7 percent, but year on year increased by 13 percent. “Other” arrivals dropped 5 percent from the previous month (72 percent year on year).

នៅខែមិថុនា តម្លៃអនុម័តគម្រោងសាងសង់សរុបនៅក្រុងភ្នំពេញកើន ២៦៥០% ធៀបនឹងខែមុន (១៨២៦% ធៀបនឹងឆ្នាំមុន) ដល់ ២៤០,៥លានដុល្លារ។ តម្លៃអនុម័តគម្រោងភូមិគ្រឹះនិងផ្ទះកើន ១៩២១% ធៀបនឹងខែមុន (១៨៧% ធៀបនឹងឆ្នាំមុន) ដល់ ៤,១លានដុល្លារ, គម្រោងផ្ទះល្វែងកើន ៩២២% (២៤៤% ធៀបនឹងឆ្នាំមុន) ដល់ ២៥,១លានដុល្លារ ហើយគម្រោងសាងសង់ផ្សេងៗទៀតកើន ៣៣៧៣% (៥៥២៤% ធៀបនឹងឆ្នាំមុន) ដល់ ២១១,២លានដុល្លារ។

In June, the total value of construction approvals in Phnom Penh increased by 2650 percent from a month earlier (1826 percent year on year) to USD240.5 m. The value of villas and houses approved went up 1921 percent from the previous month (187 percent year on year) to USD4.1 m, of flats 922 percent (244 percent year on year) to USD25.1 m and of “other” 3373 percent (5524 percent year on year) to USD211.2 m.

នៅខែមិថុនា សន្ទស្សន៍ថ្លៃទំនិញប្រើប្រាស់ (គ្រប់មុខ) កើន ០,២% ធៀបនឹងខែមុន (២,៩% ធៀបនឹងឆ្នាំមុន)។ ថ្លៃអាហារ និងភេសជ្ជៈគ្មានជាតិស្រាវកើន ០,៤% (២,៧% ធៀបនឹងឆ្នាំមុន), ថ្លៃសម្លៀកបំពាក់ និងស្បែកជើងកើន ០,៩% (៥,១% ធៀបនឹងឆ្នាំមុន) ហើយ ថ្លៃស្នាក់នៅ និងទឹកភ្លើងធ្លាក់ចុះ ០,៦% ធៀបនឹងខែមុន ប៉ុន្តែនៅថេរធៀបនឹងឆ្នាំមុន។

The consumer price index (all items) in June increased by 0.2 percent from the previous month (2.9 percent year on year). Prices of food and non-alcoholic beverages rose 0.4 percent (2.7 percent year on year) and of clothing and footwear 0.9 percent (5.1 percent year on year). Prices of housing and utilities dropped by 0.6 percent from a month earlier, but remained unchanged year on year.

នៅខែកក្កដា ម៉ាស៊ូតឡើងថ្លៃ ១,៦% ធៀបនឹងខែមុន (៨,១% ធៀបនឹងមួយឆ្នាំមុន) ដល់ ៥១២៩រៀល/លីត្រ ហើយសាំងឡើងថ្លៃ ១,៥% (៨,៤% ធៀបនឹងឆ្នាំមុន) ដល់ ៥៣៧៩រៀល/លីត្រ។ នៅខែមេសា បញ្ជីជារៀល និងដុល្លាររយៈខែ មានអត្រាការប្រាក់ថេរធៀបនឹងខែមុន ប៉ុន្តែធៀបមួយឆ្នាំមុន បញ្ជីជារៀលមានអត្រាការប្រាក់ធ្លាក់ចុះ ០,១ ឯកតាភាគរយ រីឯបញ្ជីដុល្លារមានអត្រាការប្រាក់កើន ០,០៤ ឯកតាភាគរយធៀបនឹងឆ្នាំមុន។ នៅខែសីហា ប្រាក់រៀលនៅថេរទល់នឹងដុល្លារ ធៀបនឹងខែមុន (ធ្លាក់ថ្លៃ ០,៣% ធៀបនឹងឆ្នាំមុន), ឡើងថ្លៃ ១,១% ទល់នឹងប្រាក់បាតថៃ (ធ្លាក់ថ្លៃ ០,៩% ធៀបនឹងឆ្នាំមុន) ប៉ុន្តែធ្លាក់ថ្លៃ ០,៦% ទល់នឹងប្រាក់ដុងវៀតណាម (ឡើងថ្លៃ ០,៥% ធៀបនឹងឆ្នាំមុន)។

In July, the price of diesel fuel went up 1.6 percent from the preceding month (8.1 percent year on year) to KHR5129/litre and of gasoline 1.5 percent (8.4 percent year on year) to KHR5379/litre. In April, interest rates on 12-month riel and dollar deposits remained unchanged from a month earlier, but the interest rate on riel deposits dropped 0.1 percentage points year on year, and the dollar rate increased by 0.04 percentage points year on year. In August, the riel remained unchanged from the previous month against the US dollar, but year on year depreciated by 0.3 percent. The riel appreciated against the Thai baht by 1.1 percent from the previous month, but depreciated 0.9 percent year on year. The riel depreciated against the Vietnamese dong by 0.6 percent from a month earlier, but year on year appreciated 0.5 percent.

នៅខែឧសភា សាច់ប្រាក់ងាយស្រួលសរុបកើន ១,៧% ធៀបនឹងខែមុន (២២,៥% ធៀបនឹងឆ្នាំមុន) ដល់ ៣១.៧០៨,៥ពាន់លានរៀល។ ទ្រព្យសកម្មបរទេសសុទ្ធកើន ០,៩% (២៤,៥% ធៀបនឹងមួយឆ្នាំមុន) ដល់ ២២.៥៦៣,៩ពាន់លានរៀល ហើយការផ្តល់ឥណទានដល់វិស័យឯកជនកើន ២,៧% (២៦,៥% ធៀបនឹងឆ្នាំមុន) ដល់ ២៤.៨៩៨,៣ពាន់លានរៀល។

In May, total liquidity went up 1.7 percent from a month earlier (22.5 percent year on year) to KHR31,708.5 bn. Net foreign assets rose 0.9 percent (24.5 percent year on year) to KHR22,563.9 bn, and credit to the private sector went up 2.7 percent (26.5 percent year on year) to KHR24,898.3 bn.

នៅខែឧសភា ការនាំចូលដែកថែបធ្លាក់ចុះ ៧,៩% ធៀបនឹងខែមុន (៣៦,៧% ធៀបនឹងឆ្នាំមុន) មកត្រឹម ៧,៩លានដុល្លារ, ការនាំចូលស៊ីម៉ង់ត៍ធ្លាក់ចុះ ១០,៤% (កើន ៣៧,៥% ធៀបនឹងឆ្នាំមុន) មកត្រឹម ៨,៧លានដុល្លារ រីឯការនាំចូលសម្ភារៈសំណង់ធ្លាក់ចុះ ៦,២% (កើន៩,៤%ធៀបនឹងឆ្នាំមុន) មកត្រឹម ៦,១លានដុល្លារ។

In May, imports of steel dropped by 7.9 percent from the preceding month (36.7 percent year on year) to USD7.9 m. Imports of cement went down 10.4 percent to USD8.7 m, but year on year increased by 37.5 percent. Imports of construction equipment declined by 6.2 percent from a month earlier to USD6.1 m, but year on year rose 9.4 percent.

នៅខែមិថុនា ការនាំចេញសម្លៀកបំពាក់ (គ្រប់មុខ) កើន ១៨,១% ធៀបនឹងខែមុន (១២,៩% ធៀបនឹងឆ្នាំមុន) ដល់ ៤៦៤,១លានដុល្លារ, ស្បែកជើងកើន ៤,៨% (២០,១% ធៀបនឹងឆ្នាំមុន) ដល់ ៣៣,៥លានដុល្លារ, ឯផលិតផលវាយនភ័ណ្ឌផ្សេងៗកើន ៩៧% (១៧១,១% ធៀបនឹងឆ្នាំមុន) ដល់ ១៤,៣លានដុល្លារ។

In June, exports of clothing (all kinds) went up 18.1 percent from a month earlier (12.9 percent year on year) to USD464.1 m, of shoes 4.8 percent (20.1 percent year on year) to USD33.5 m and of other textile products 97 percent (171.1 percent year on year) to USD14.3 m.

នៅខែមិថុនា ការនាំចូលប្រេងនៅកើន ៣៦,១% ធៀបនឹងខែមុន (១៤,៧% ធៀបនឹងឆ្នាំមុន) ដល់ ៨,៥លានដុល្លារ។ ការនាំចូល ម៉ាស៊ូតធ្លាក់ចុះ ៤,០% ធៀបនឹងខែមុន (កើន ១៤,៤% ធៀបឆ្នាំមុន) មកត្រឹម ៤៥,២លានដុល្លារ, សាំងធ្លាក់ចុះ

In June, imports of fuel oil went up 36.1 percent from the previous month (14.7 percent year on year) to USD8.5 m. Imports of diesel dropped 4.0 percent from a month earlier, but increased by 14.4 percent year on year to USD45.2 m. Imports of gasoline declined 6.9 percent from the previous month (8.3 percent year on year) to USD24.1 m.

In May, total government current revenue declined 25.4 percent from a month earlier to KHR665.2 bn, but rose 7.3

៦,៩% ធៀបនឹងខែមុន (៨,៣% ធៀបនឹងឆ្នាំមុន) មកត្រឹម ២៨,១លានដុល្លារ។ នៅខែខុសគ្នា ចំណូលចរន្តសរុបរបស់រដ្ឋាភិបាលធ្លាក់ចុះ ២៥,៤% ធៀបខែមុន (កើន ៧,៣% ធៀបឆ្នាំមុន) មកត្រឹម ៦៦៥,២ពាន់លានរៀល ក្នុងនេះ ចំណូលពន្ធនាំចេញនាំចូលកើន ២៧,៨% (២៩,១% ធៀបនឹងឆ្នាំមុន) ដល់ ១៣១,៦ពាន់លានរៀល, ចំណូលពន្ធក្នុងស្រុកធ្លាក់ចុះ ៣៣,៨% (កើន ៨,៥%ធៀបនឹងឆ្នាំមុន) មកត្រឹម ៤៧១,២ពាន់លានរៀល, ចំណូលមិនមែនពន្ធគ្រប់គ្រង ១៩,៦% (២៥,៣% ធៀបនឹងឆ្នាំមុន) មកត្រឹម ៦២,៤ពាន់លានរៀល។ នៅខែដដែល ចំណាយចរន្តសរុបធ្លាក់ចុះ ១,៦% ធៀបនឹងខែមុន (កើន ១៣,៧% ធៀបនឹងឆ្នាំមុន) មកត្រឹម ៦១០ពាន់លានរៀល ក្នុងនេះ ចំណាយលើរៀបចំការប្រកួតប្រជែង ៦,៩% (២៨,៦% ធៀបឆ្នាំមុន) មកត្រឹម ២១,៣ពាន់លានរៀល, ចំណាយលើឧបត្ថម្ភធន និងជំនួយសង្គមកើន ៧,៦% (១៤៦,៣% ធៀបនឹងឆ្នាំមុន) ដល់ ២៣៤,៦ ពាន់លានរៀល, ចំណាយលើសេវាកម្មផ្សេងៗធ្លាក់ចុះ ៦,៣% (កើន ១៨,៩% ធៀបនឹងឆ្នាំមុន) មកត្រឹម ១៥៨,៨ពាន់លានរៀល។

នៅខែមិថុនា អង្ករថ្លៃឡើងថ្លៃ ០,១% ធៀបខែមុន (ធ្លាក់ថ្លៃ ៣,៣% ធៀបឆ្នាំមុន) ដល់ ៧១៤ដុល្លារ/តោន, កៅស៊ូធ្លាក់ថ្លៃ ៣,៨% (២០,៧% ធៀបឆ្នាំមុន) មកត្រឹម ២៤៦១ដុល្លារ/តោន, ម្សៅដំឡូងលើឡើងថ្លៃ ៦,០% (ធ្លាក់ថ្លៃ ៣,២% ធៀបឆ្នាំមុន) ដល់ ៣២៧ដុល្លារ/តោន។ នៅខែដដែល អង្កររៀតណាមធ្លាក់ថ្លៃ ៣,០% ធៀបខែមុន (១,៤% ធៀបឆ្នាំមុន) មកត្រឹម ៤៣១ដុល្លារ/តោន, កៅស៊ូធ្លាក់ថ្លៃ ៤,១%(២០,១% ធៀបឆ្នាំមុន) មកត្រឹម ២២៦៥ដុល្លារ/តោន ឯគ្រាប់ស្វាយចន្ទី ធ្លាក់ថ្លៃ ២,១% (១១% ធៀបនឹងឆ្នាំមុន) មកត្រឹម ៦២២៧ដុល្លារ/តោន។

នៅខែមិថុនា ការនាំចេញអង្ករនៅថ្ងៃធ្លាក់ចុះ ១៩% ធៀបខែមុន (០,៥% ធៀបឆ្នាំមុន) មកត្រឹម ៣០៥លានដុល្លារ, កៅស៊ូនិងជំរិតម្សៅធ្លាក់ចុះ ៧,៧% (២០,៥% ធៀបឆ្នាំមុន) មកត្រឹម ៥១៩លានដុល្លារ ឯម្សៅដំឡូងលើធ្លាក់ចុះ ៣៨,៤%(កើន ០,៩% ធៀបឆ្នាំមុន) មកត្រឹម ១២២លានដុល្លារ។ នៅខែដដែល ការនាំចេញអង្ករ នៅរៀតណាមធ្លាក់ចុះ ១១,៥%ធៀបខែមុន (២៧,៧% ធៀបឆ្នាំមុន) ដល់ ២៧៧ លានដុល្លារ, គ្រាប់ស្វាយចន្ទីធ្លាក់ចុះ ១៣,៨% (១១% ធៀបឆ្នាំមុន) ដល់ ១៣៧ លានដុល្លារ, កៅស៊ូកើន ១០,៦% (១០,៦%ធៀបឆ្នាំមុន) ដល់ ១៨៨លានដុល្លារ។

នៅខែមិថុនា ការនាំចេញនៅ US កើន ៣,១% ធៀបនឹងខែមុន (១,១% ធៀបឆ្នាំមុន) ដល់ ១៣៤,៣ពាន់លានដុល្លារ ហើយការនាំចេញនៅតំបន់អឺរ៉ុបកើន ៤,៣% (៤,០% ធៀបឆ្នាំមុន) ដល់ ២១១ពាន់លានដុល្លារ។ ការនាំចេញនៅជប៉ុន កើន ៤,៩% (ធ្លាក់ចុះ ១៤,៦% ធៀបនឹងឆ្នាំមុន) ដល់ ៦០,៨ពាន់លានដុល្លារ ឯការនាំចេញនៅម៉ាឡេស៊ីធ្លាក់ចុះ ២,២% (៥,៧% ធៀបនឹងឆ្នាំមុន) ដល់ ១៨,១ ពាន់លានដុល្លារ។ ការនាំចូលនៅម៉ាឡេស៊ីធ្លាក់ចុះ ៤,៧% ធៀបនឹងខែមុន (កើន ២,៦% ធៀបនឹងឆ្នាំមុន) ដល់ ១៦,៧ពាន់លានដុល្លារ។ អតិរេកពាណិជ្ជកម្មរបស់ ម៉ាឡេស៊ីកើន ៤៤,២% ធៀបនឹងខែមុន ប៉ុន្តែធ្លាក់ចុះ ៥២,៤% ធៀបនឹងឆ្នាំមុន ដល់ ១,៤ពាន់លានដុល្លារ។

នៅខែកក្កដា អង្ករ USA 2/4 ធ្លាក់ថ្លៃ ០,៥% ធៀបនឹងខែមុន (ឡើងថ្លៃ ១១,៧% ធៀបឆ្នាំមុន) មកត្រឹម ៦៣៩ដុល្លារ/តោន។ អង្ករ Thai 100%B ធ្លាក់ថ្លៃ ១,៩% ធៀបនឹងខែមុន (៧,៥% ធៀបឆ្នាំមុន) ដល់ ៥៤០ដុល្លារ/តោន។ សណ្តែកសៀង (US No. 1) ធ្លាក់ថ្លៃ ១,៩% ធៀបនឹងខែមុន (១១,១% ធៀបឆ្នាំមុន) ដល់ ៥៧៧ ដុល្លារ/តោន, ពោត (US No. 2) ធ្លាក់ថ្លៃ ៣,៥% (ឡើងថ្លៃ ១១,៥% ធៀបនឹង ឆ្នាំមុន) មកត្រឹម ២៨៩,៥ដុល្លារ/តោន, ប្រេងឆា (ប្រេងឆៅ) ឡើងថ្លៃ ៣,៤% ធៀបនឹងខែមុន (១៨% ធៀបឆ្នាំមុន) ដល់ ៨៣៣ដុល្លារ/តោន ហើយកៅស៊ូ ឡើងថ្លៃ ៣,៨% (២២,៧% ធៀបនឹងឆ្នាំមុន) ដល់ ២២៧៨,៤ដុល្លារ/តោន។ ប្រេងឆៅ (OPEC spot) ឡើងថ្លៃ ៣,១% ធៀបនឹងខែមុន (៤,៩% ធៀបឆ្នាំមុន) ដល់ ១០៤,៥ដុល្លារ/តោន, ម៉ាស៊ូត (low sulphur No. 2) ឡើងថ្លៃ ៤,២% (៣,៥% ធៀបឆ្នាំមុន) ដល់ ០,៧៥ដុល្លារ/លីត្រ ហើយសាំង (US Gulf Coast) ឡើងថ្លៃ ៦,១% (៧,៩% ធៀបឆ្នាំមុន) ដល់ ០,៧៥ដុល្លារ/លីត្រ។

percent year on year. Revenue from import and export taxes went up 27.8 percent from the preceding month (29.1 percent year on year) to KHR131.6 bn. Revenue from domestic taxes dropped 33.8 percent from a month earlier to KHR471.2 bn, but rose 8.5 percent year on year. Non-tax revenue declined by 19.6 percent from a month earlier (25.3 percent year on year) to KHR62.4 bn. In the same month, total current expenditure decreased by 1.6 percent from the preceding month to KHR610 bn, but increased by 13.7 percent year on year. Expenditure on wages went down 6.9 percent from the previous month (28.6 percent year on year) to KHR21.3 bn. Expenditure on subsidies and social assistance rose 7.6 percent from the previous month (146.3 percent year on year) to KHR234.6 bn. Expenditure on other services dropped by 6.3 percent from a month earlier to KHR158.8 bn, but went up 14.9 percent year on year.

In June, the price of Thai rice went up 0.1 percent from a month earlier to USD714/tonne, but dropped 3.3 percent year on year. The price of rubber declined by 3.8 percent from the preceding month (20.7 percent year on year) to USD2461/tonne. The price of tapioca went up 6.0 percent from the previous month, but declined 3.2 percent year on year to USD327/tonne. In the same month, the price of Vietnamese rice dropped 3.0 percent from a month earlier (1.4 percent year on year) to USD431/tonne, of rubber by 4.1 percent (20.1 percent year on year) to USD2265/tonne and of cashew nuts by 2.1 percent (11 percent year on year) to USD6227/tonne.

Exports of Thai rice in June decreased 19 percent from the preceding month (0.5 percent year on year) to USD305 m and of natural rubber and similar natural gums by 7.7 percent from (20.5 percent year on year) to USD519 m. Exports of tapioca declined 34.4 percent from the previous month, but rose 0.9 percent year on year to USD122 m. In the same month, exports of Vietnamese rice dropped 11.5 percent from a month earlier (27.7 percent drop year on year) to USD277 m and of cashew nuts by 13.8 percent (11 percent decrease year on year) to USD137 m. Exports of rubber rose by 10.6 percent (10.6 percent year on year) to USD188 m.

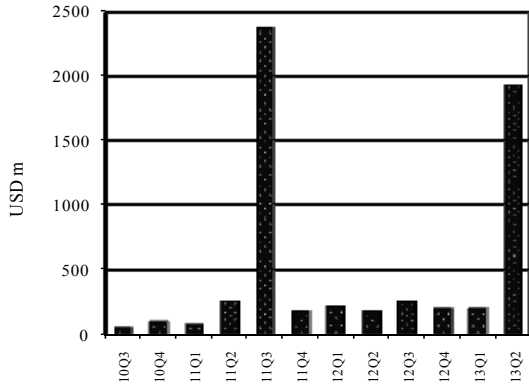
In June, US exports rose 3.1 percent from a month earlier (1.1 percent year on year) to USD134.3 bn and those of the euro zone by 4.3 percent (4.0 percent year on year) to USD211 bn. Exports of Japan went up 4.9 percent from the preceding month, but decreased by 14.6 percent year on year to USD60.8 bn. In June, Malaysian exports declined by 2.2 percent from a month earlier (5.7 percent year on year) to USD18.1 bn. Imports went down 4.7 percent from the previous month, but rose by 2.6 percent year on year to USD16.7 bn. The Malaysian trade surplus increased by 44.2 percent from the previous month, but declined by 52.4 percent year on year to USD1.4 bn.

In July, the price of USA 2/4 rice dropped 0.5 percent from the preceding month, but rose by 11.7 percent year on year to USD639/tonne. The price of Thai rice declined by 1.9 percent from the preceding month (7.5 percent year on year) to USD540/tonne. Prices of soybeans (US No. 1) went down 1.9 percent from a month earlier (11.1 percent year on year) to USD577/tonne, of maize (US No. 2) by 3.5 percent (11.5 percent rise year on year) to USD289.5/tonne, of palm oil (crude) rose by 3.4 percent from the previous month (18 percent year on year) to USD833/tonne and of rubber by 3.8 percent (22.7 percent year on year) to USD2278.4/tonne. In July, the OPEC spot price of crude oil rose 3.1 percent from a month earlier (4.9 percent year on year) to USD104.5/barrel, of diesel fuel (low sulphur No. 2) by 4.2 percent (3.5 percent year on year) to USD0.79/litre and of gasoline (US Gulf Coast) by 6.1 percent (7.9 percent year on year) to USD0.75/litre.

សកម្មភាពសេដ្ឋកិច្ចសំខាន់ៗ និង ថ្លៃទំនិញនៅកម្ពុជា

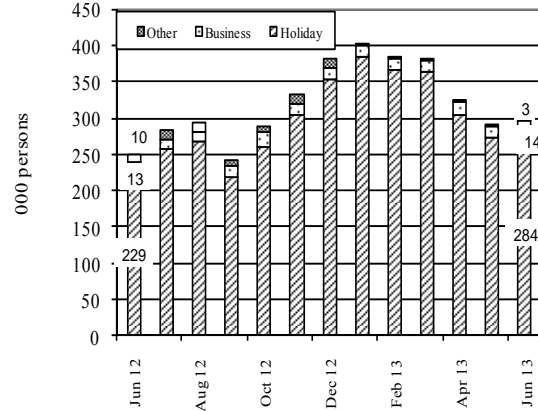
Main Economic Activities and Consumer Prices in Cambodia

**Fixed Asset Investment Approvals by CDC\***  
Industry  
2010 Q3–2013 Q2



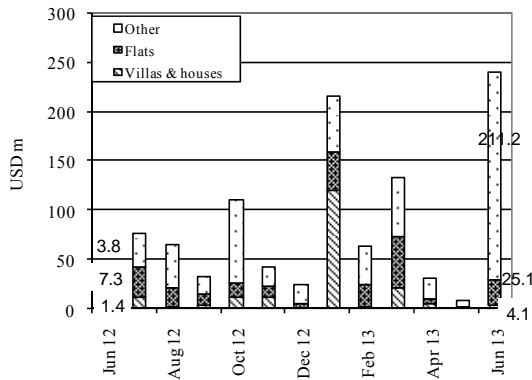
\*Including expansion projects.  
Source: Council for the Development of Cambodia

**Foreign Visitor Arrivals**  
June 2012–June 2013



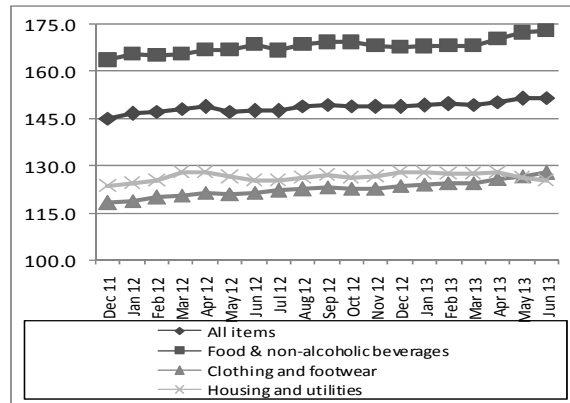
Source: Ministry of Tourism

**Phnom Penh: Value of Construction Approvals**  
June 2012–June 2013



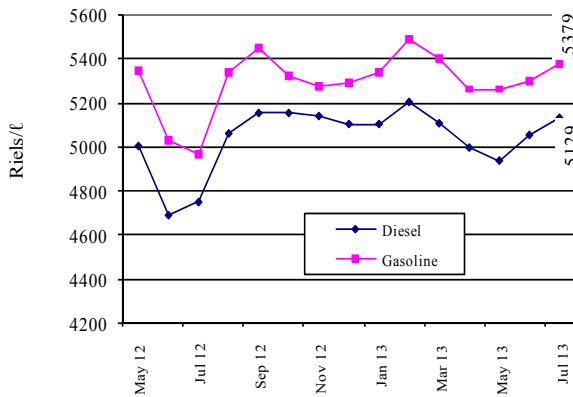
Source: Municipality of Phnom Penh

**Consumer Price Index**  
(December 2006=100)  
December 2011–June 2013



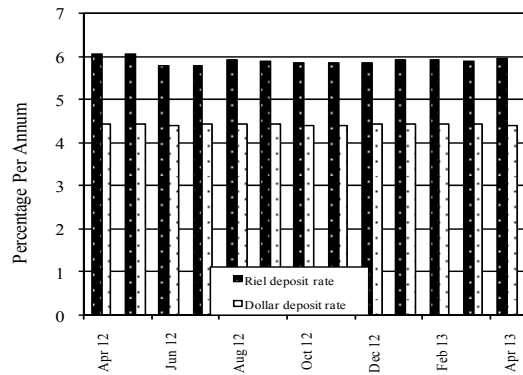
Source: National Institute of Statistics

**Phnom Penh: Gasoline & Diesel Prices**  
May 2012–July 2013



Source: CDRI

**Interest Rates on 12-Month Bank Deposits**  
April 2012–April 2013

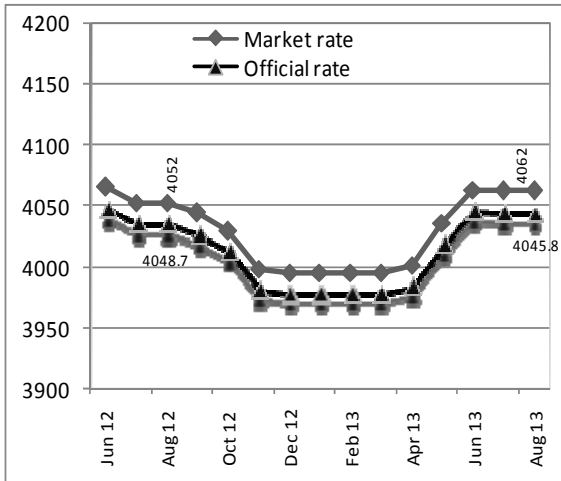


Source: Economic & Monetary Statistics, NBC

## អត្រាប្តូររូបិយប័ណ្ណ និង ឥណទាន

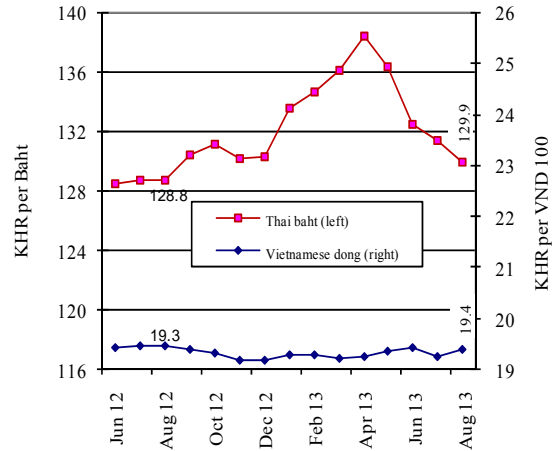
### Exchange Rates, Money and Credit

**Riels per US Dollar**  
June 2012–August 2013



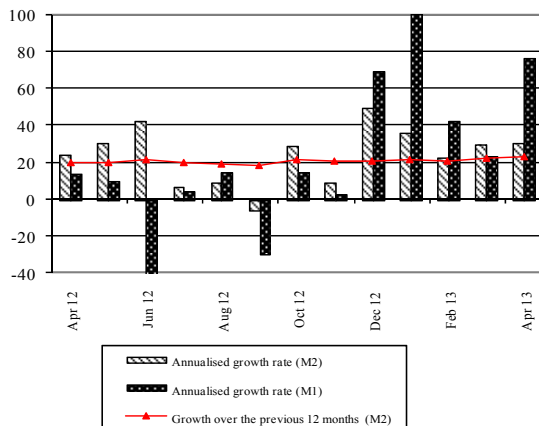
Source: National Bank of Cambodia

**Riels per THB & VND**  
June 2012–August 2013



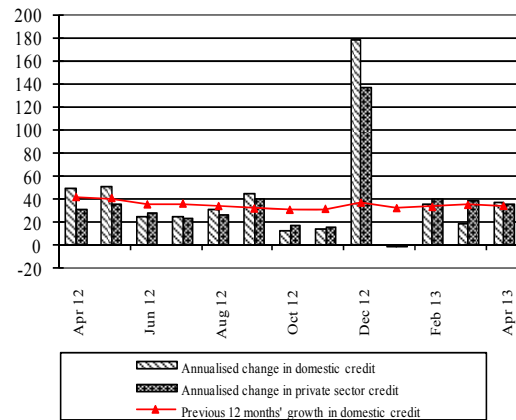
Source: National Bank of Cambodia

**Monetary Survey (%)**  
April 2012–April 2013



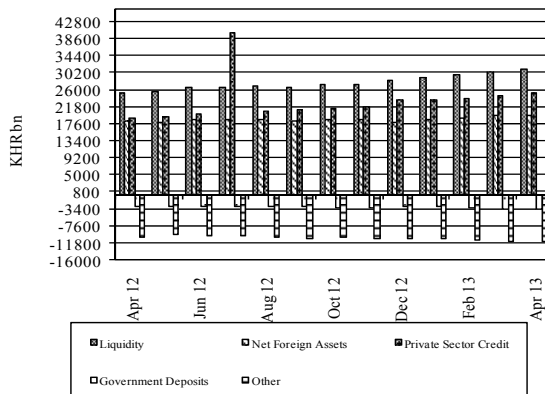
Source: National Bank of Cambodia

**Domestic Credit (%)**  
April 2012–April 2013



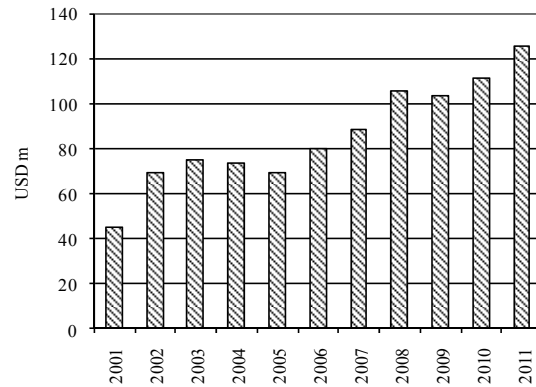
Source: National Bank of Cambodia

**Monetary Survey**  
April 2012–April 2013



Source: National Bank of Cambodia

**External Development Assistance Disbursement**  
Education  
2001–2011

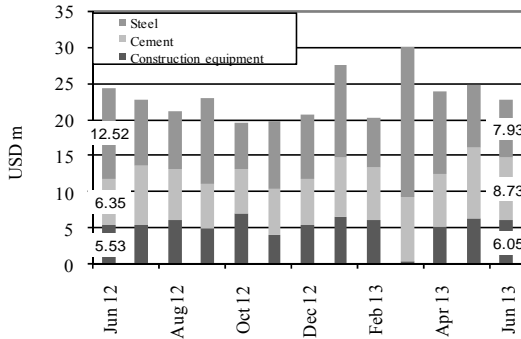


Source: The Cambodia Development Effectiveness Report 2011, CDC

ពាណិជ្ជកម្មក្រៅប្រទេស និង ការអនុវត្តថវិកាជាតិ

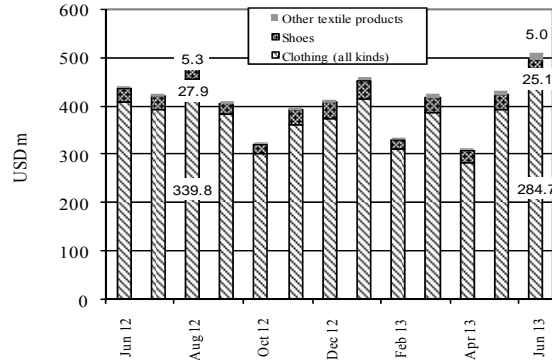
External Trade and National Budget Operations

**Cambodian Imports**  
June 2012–June 2013



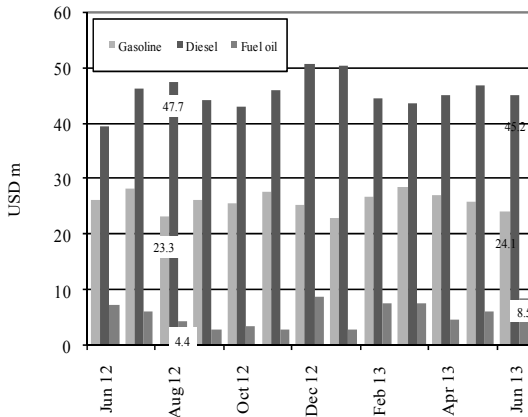
Source: Economic & Monetary Statistics, NBC

**Cambodian Exports**  
June 2012–June 2013



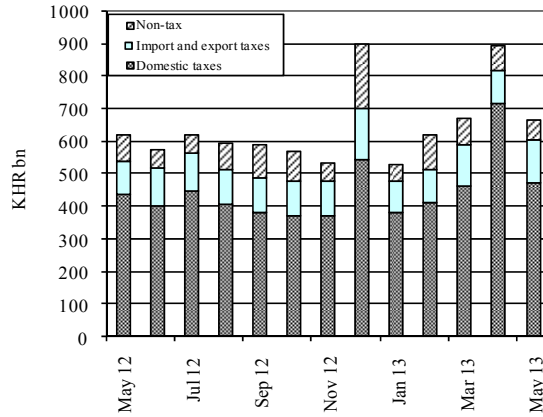
Source: Economic & Monetary Statistics, NBC

**Imports: Energy**  
June 2012–June 2013



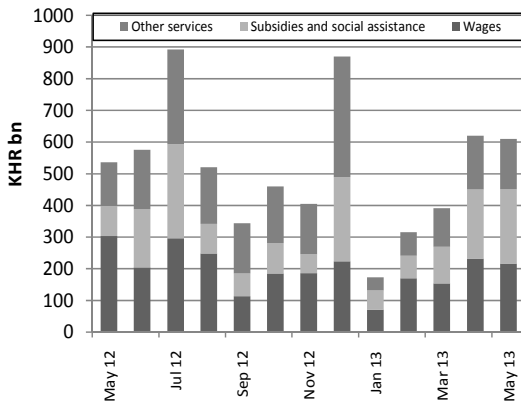
Source: Economic & Monetary Statistics, NBC

**Current Budget Revenue**  
May 2012–May 2013



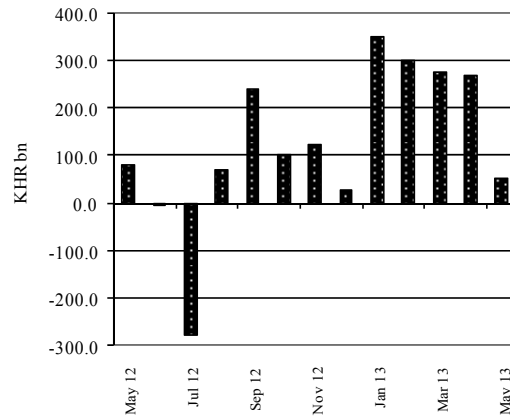
Source: MEF Bulletin

**Current Budget Expenditure**  
May 2012–May 2013



Source: MEF Bulletin

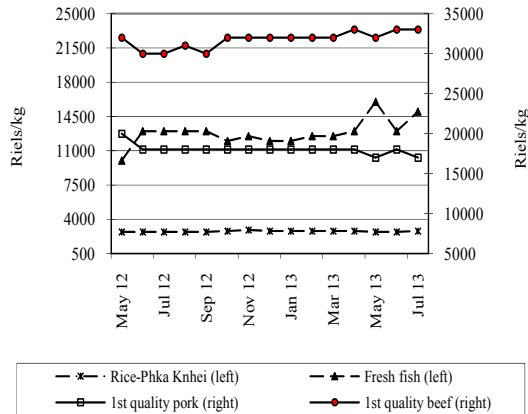
**Current Budget Balance**  
May 2012–May 2013



Source: MEF Bulletin

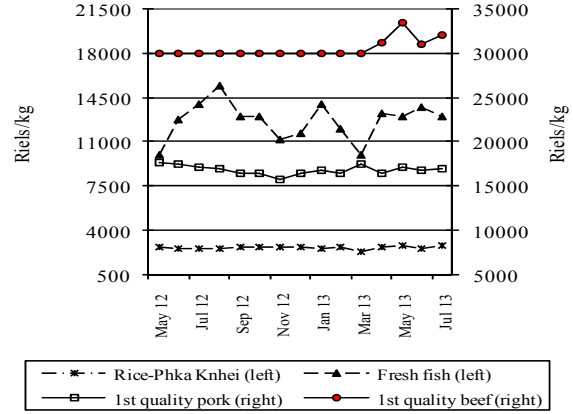
**ផ្លូវស្បៀងអាហារតាមខេត្តក្នុងប្រទេសកម្ពុជា**  
**Provincial Food Prices**

**Food Prices in Siem Reap Province**  
 May 2012–July 2013



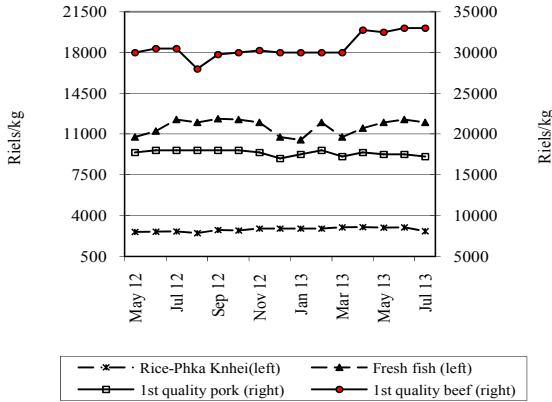
Source: CDRI

**Food Prices in Battambang Province**  
 May 2012–July 2013



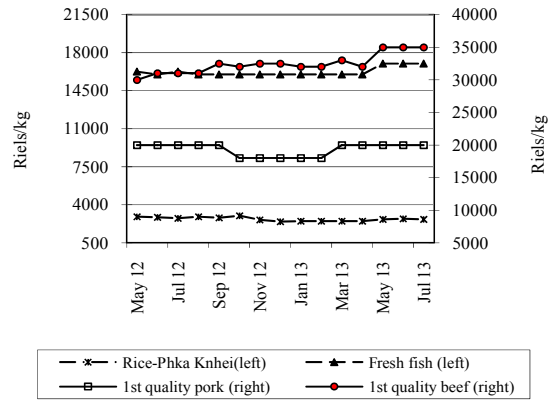
Source: CDRI

**Food Prices in Kompong Cham Province**  
 May 2012–July 2013



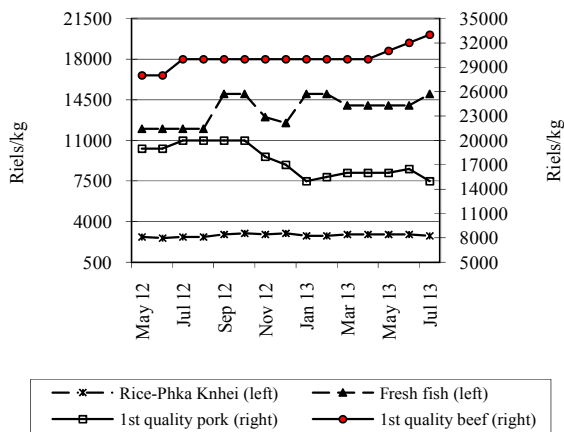
Source: CDRI

**Food Prices in Kampot Province**  
 May 2012–July 2013



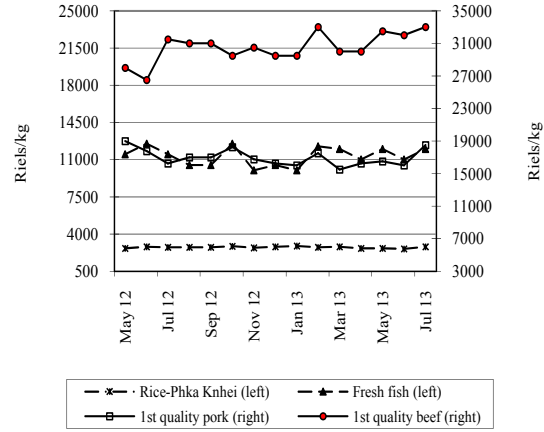
Source: CDRI

**Food Prices in Svay Rieng Province**  
 May 2012–July 2013



Source: CDRI

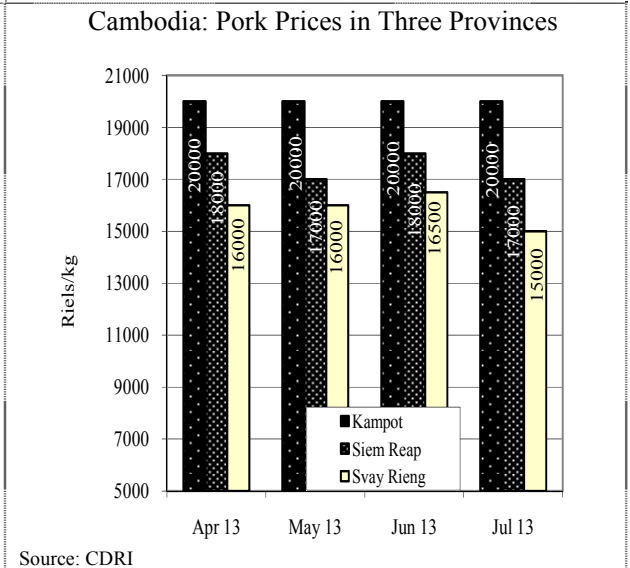
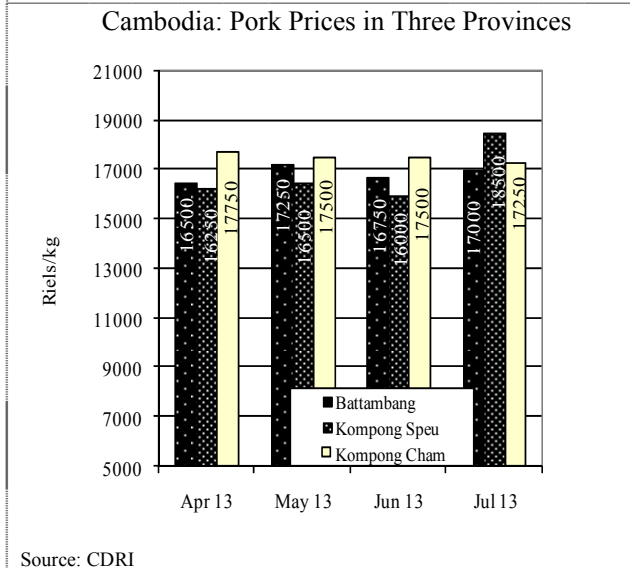
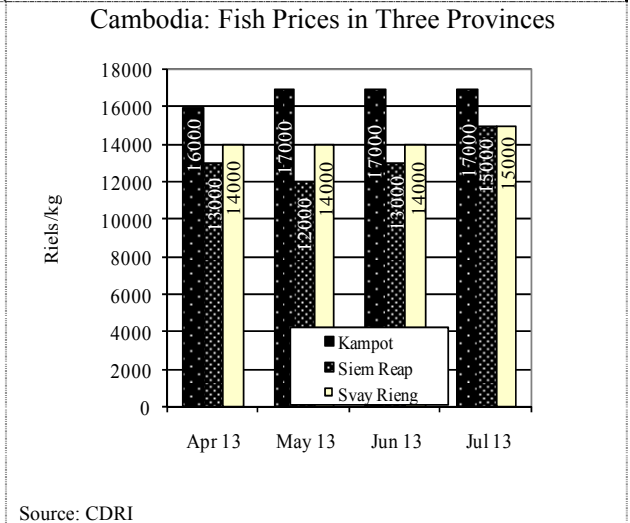
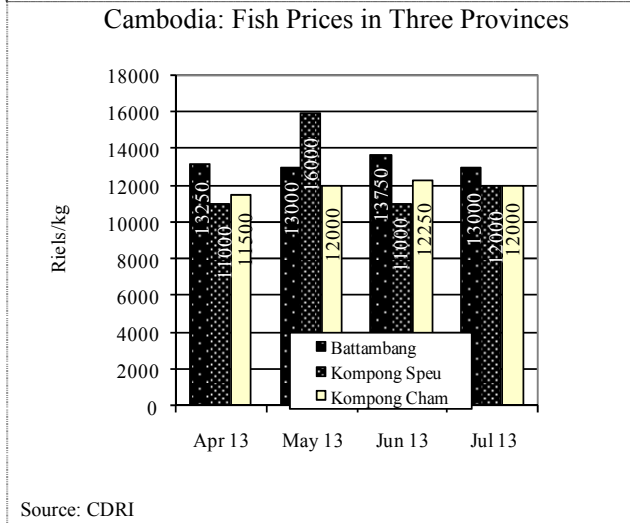
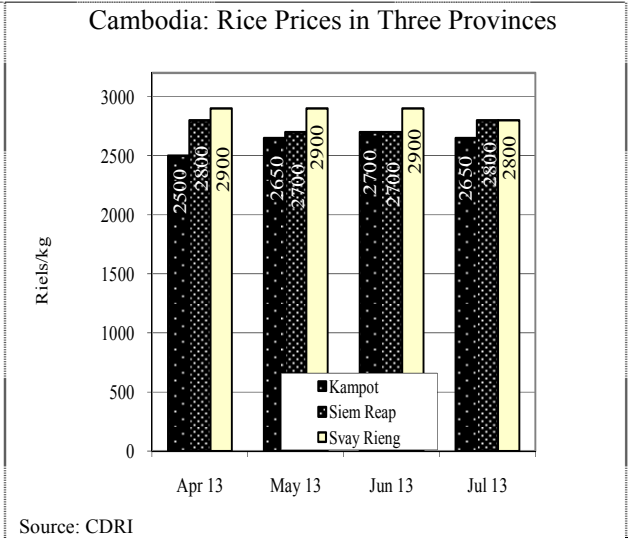
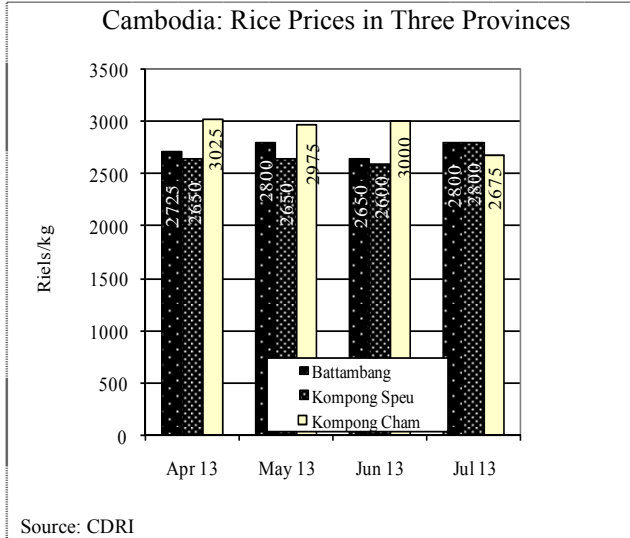
**Food Prices in Kompong Speu Province**  
 May 2012–July 2013



Source: CDRI

ស្ថិតិវិញ្ញាណកម្មសេដ្ឋកិច្ចប្រទេសកម្ពុជា៖ តារាងមូលដ្ឋាន

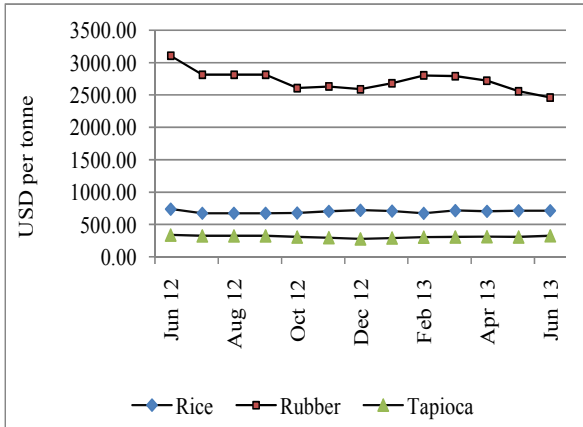
Provincial Goods Prices in Cambodia





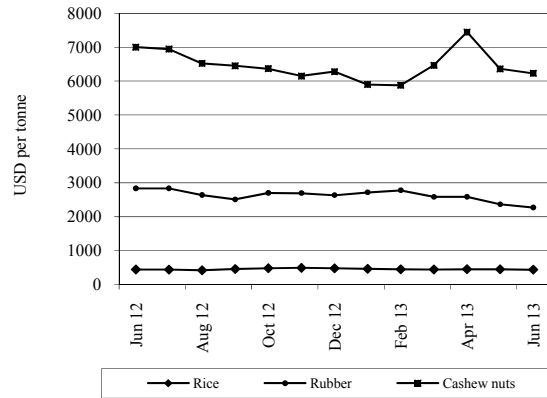
**ផ្នែកនិក្ខេប ការនាំចេញ និង ចំនួនទេសចរអន្តរជាតិទៅដល់ប្រទេសជាដៃគូរបស់កម្ពុជា**  
**Goods Prices, Exports and International Tourist Arrivals to Partners of Cambodia**

**Thailand: Prices of Rubber, Rice and Tapioca**  
June 2012–June 2013



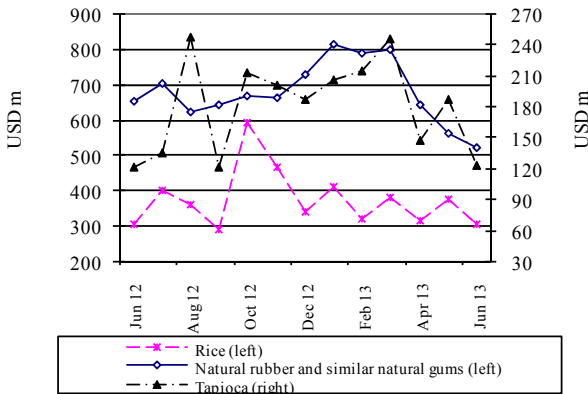
Source: Bank of Thailand, *Foreign Trade and Balance of Payments*

**Vietnam: Prices of Rubber, Rice and Cashew Nuts**  
June 2012–June 2013



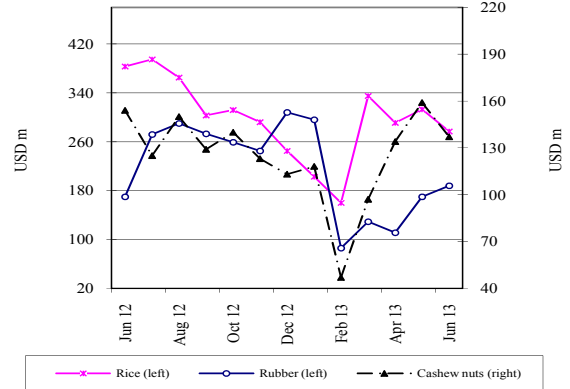
Source: General Statistics Office of Vietnam

**Thailand: Exports**  
June 2012–June 2013



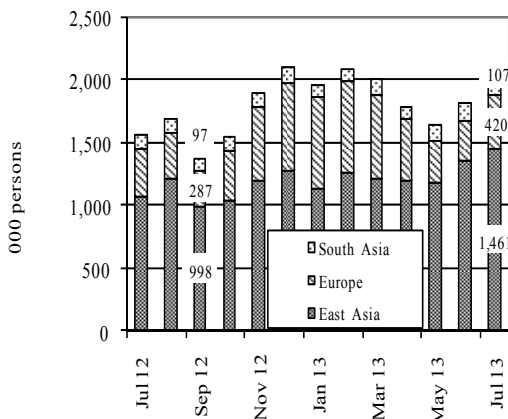
Source: Customs Department of Thailand

**Vietnam: Exports**  
June 2012–June 2013



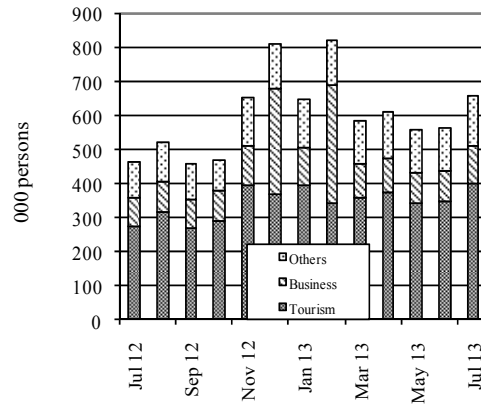
Source: General Statistics Office of Vietnam

**Thailand: International Arrivals**  
July 2012–July 2013



Source: Thailand Office of Tourism Development

**Vietnam: International Arrivals**  
July 2012–July 2013

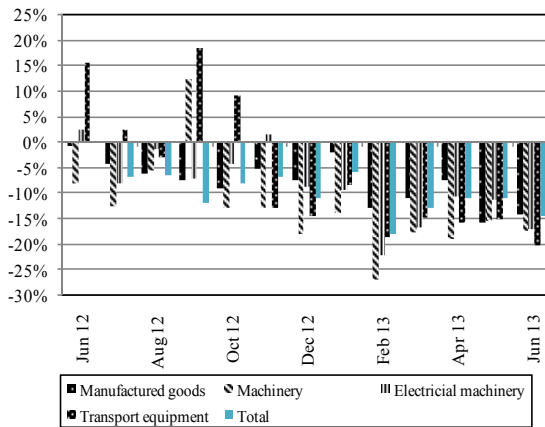


Source: Estimates by General Statistics Office of Vietnam

**សកម្មភាពសេដ្ឋកិច្ច និង អត្រាអតិថិជននៅបណ្តាប្រទេសជាដៃគូរបស់កម្ពុជា**

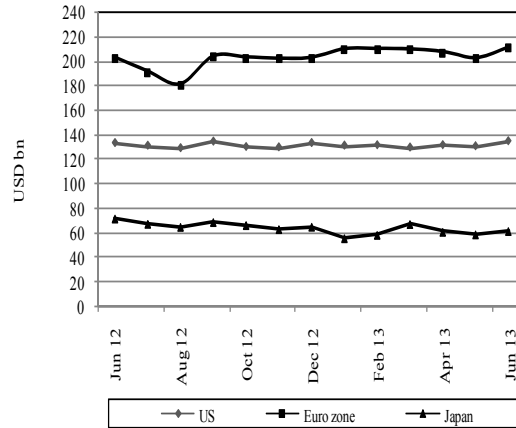
**Economic Activity and Inflation Rates of Selected Economic Partners of Cambodia**

**Year-on-Year Growth of Main Exports: Japan**  
June 2012–June 2013



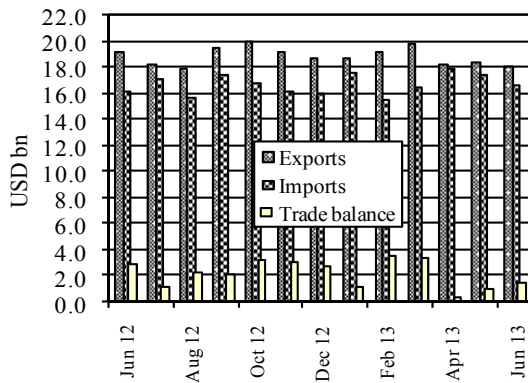
Source: Japanese Trade and Investment Statistics

**Goods Exports: US, Euro Zone & Japan**  
June 2012–June 2013



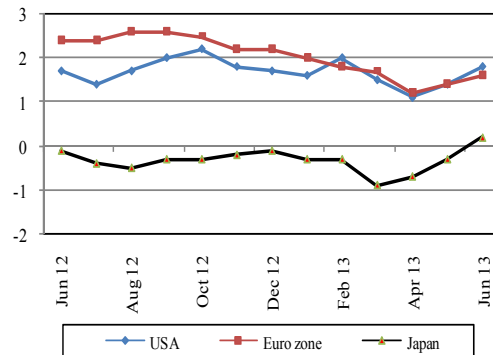
Sources: BEA, Eurostat and OECD

**External Trade: Malaysia**  
June 2012–June 2013



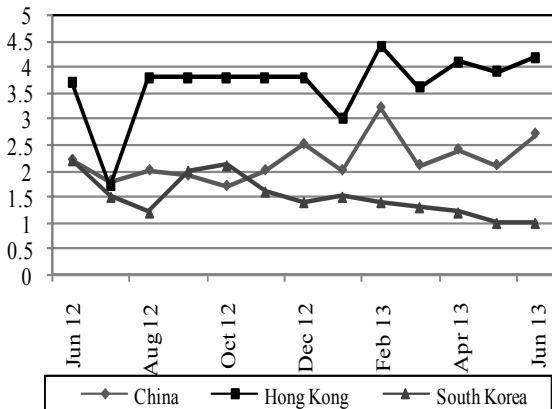
Source: Ministry of International Trade and Industry, Malaysia

**Inflation Rates: US, Euro Zone & Japan**  
(percent price change from a year earlier)  
June 2012–June 2013



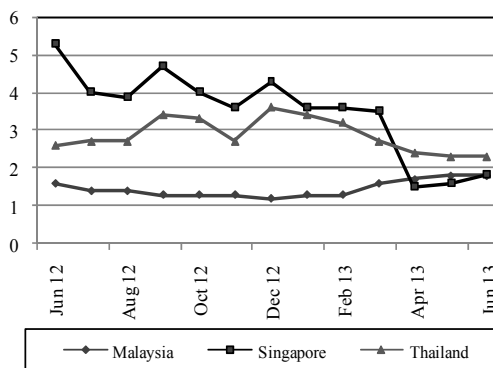
Sources: IMF and Economist (28 June 2013)

**Inflation Rates: China, Hong Kong & South Korea**  
(percent price change from a year earlier)  
June 2012–June 2013



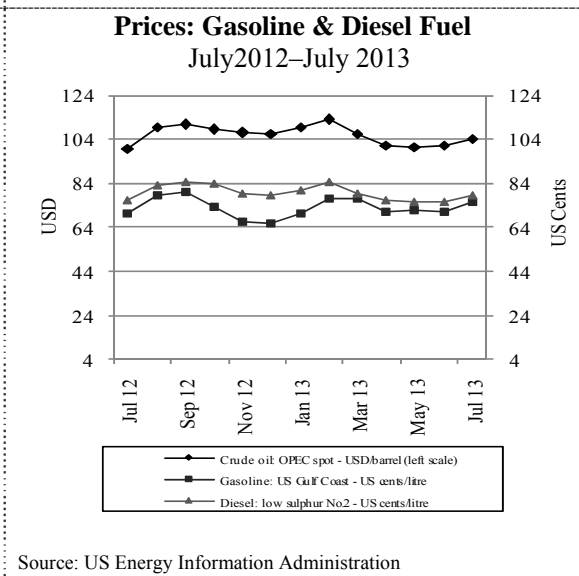
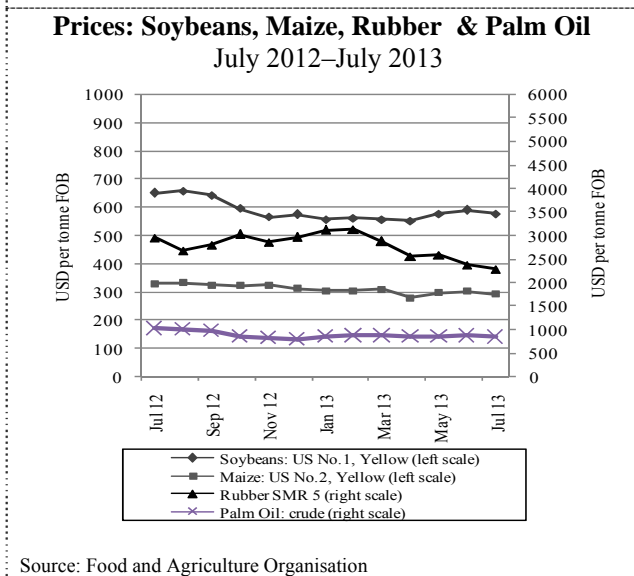
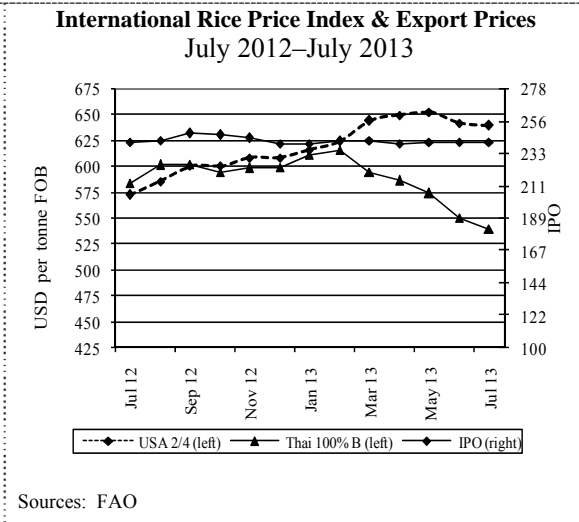
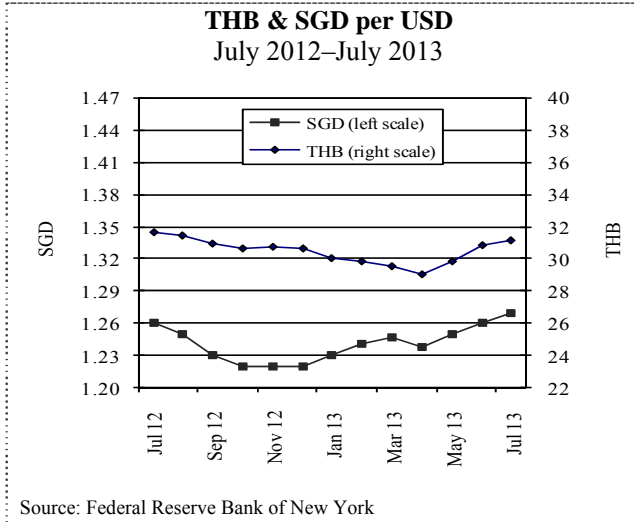
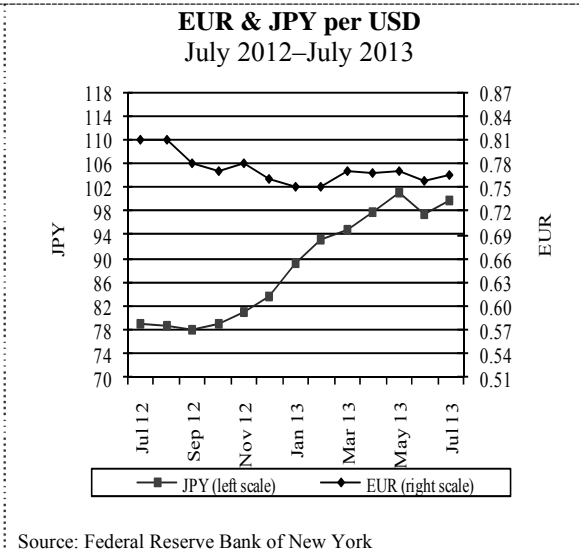
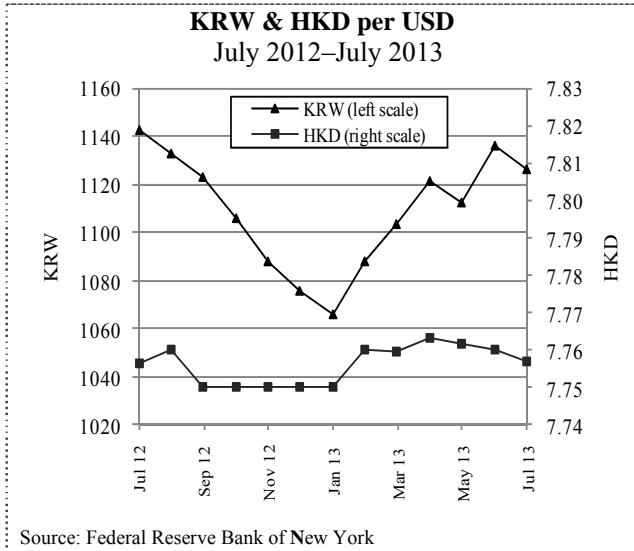
Sources: IMF and Economist (28 June 2013)

**Inflation Rates: Selected ASEAN Countries**  
(percent price change from a year earlier)  
June 2012–June 2013



Sources: IMF and Economist (28 June 2013)

**អត្រាប្តូរប្រាក់ និង ស្ថានភាពផ្ទៃដីនិញរបស់ទីផ្សារអន្តរជាតិ**  
**Exchange Rates and Commodity Prices in World Markets**



**ព័ត៌មានសេដ្ឋកិច្ច**  
**Economic News**

**ព័ត៌មានសេដ្ឋកិច្ចសំខាន់**

**វិនិយោគខាងផ្នែកកាត់ដេរ និងស្បែកជើងធ្លាក់ចុះ ២៩,៨% នៅឆ្នាំមុន ១១ ឆ្នាំ២០១៣**

នៅឆ្នាំមុន ១១ ឆ្នាំ២០១៣ វិនិយោគគិតជាទ្រព្យសកម្មជាប់លាប់សរុប ខាងផ្នែកកាត់ដេរនិងស្បែកជើង អនុម័តដោយក្រុមប្រឹក្សាអភិវឌ្ឍន៍កម្ពុជា ធ្លាក់ចុះ ២៩,៨% មកត្រឹម ២៣៥,១លានដុល្លារ ធៀបនឹងពេលដូចគ្នា កាលពីឆ្នាំមុន។ វិនិយោគក្នុងផ្នែកនេះ រួមចំណែក ១០,២% នៃតម្លៃ គម្រោងវិនិយោគសរុប។ មានការអនុម័តផងដែរ លើគម្រោងវិនិយោគខាង ផ្នែក ការកែច្នៃឈើ (០,៧% នៃតម្លៃសរុប), វិស្វកម្ម (០,៧%), សំណង់ (០,៩%), សណ្ឋាគារ (៤,៦%) និង កសិឧស្សាហកម្ម (២,៦%)។

វិនិយោគិនចម្បងៗក្នុងផ្នែកកាត់ដេរ និងស្បែកជើង គឺមាន ប្រទេសចិន (រួមចំណែក ៣៨,៨% នៃតម្លៃវិនិយោគទុនសរុបក្នុងផ្នែកនេះ ឬស្មើនឹង ៩១,៣លានដុល្លារ), កូរ៉េខាងត្បូង (១៩,៣%), ចក្រភពអង់គ្លេស (១៣,៣%), តៃវ៉ាន់ (៥,៧%) និង ថៃ (៤,៧%) ឯគម្រោងវិនិយោគ ក្នុងស្រុកមានប្រមាណ ១,៧%។

នៅត្រីមាសទី១ ឆ្នាំ២០១៣ គម្រោងវិនិយោគសរុបទទួលបានការអនុម័ត កើន ២៣៣,៧% ធៀបនឹងត្រីមាសដូចគ្នាឆ្នាំមុន ដល់ ២,៣ពាន់លាន ដុល្លារ ដែលជាលទ្ធផលគួរឲ្យកត់សម្គាល់មួយ បង្ហាញពីទំនុកចិត្តរបស់ វិនិយោគិនទៅលើស្ថានភាពនយោបាយ និងសេដ្ឋកិច្ចនៅកម្ពុជា និង គោលបំណងធ្វើពិពិធកម្ម និងស្វែងរកផលចំណេញក្នុងវិស័យដទៃទៀត។

**Economic News Highlights**

**Investments in garments and footwear decline 29.8 percent in first half of year**

Total fixed asset investments in garment and footwear manufacture approved by the Council for the Development of Cambodia dropped by 29.8 percent in the first six months of 2013 compared to the same period last year, to USD235.1 m. Investments in this area accounted for 10.2 percent of the total investment value. Investments were also approved in wood processing (0.7 percent of the total value), engineering (0.7 percent), construction (0.9 percent), hotels (4.6 percent) and agro-industry (2.6 percent).

Top investors in garments and footwear were China, accounting for 38.8 percent of total investment value or USD91.3 m, followed by South Korea (19.3 percent), the United Kingdom (13.3 percent), Taiwan (5.7 percent) and Thailand (4.7 percent). Domestic investments accounted for 1.7 percent.

In the first half of 2013, total investments approved jumped 233.7 percent from the same period last year to USD2.3 bn, a remarkable achievement signifying continued investor confidence in political and economic conditions of the country and a desire to diversify and explore profitability in other sectors.

**Links to others economic news**

1. “Cambodia's inflation stands at 2.9 pct in first half of 2013: central bank” ([http://news.xinhuanet.com/english/business/2013-08/28/c\\_132670860.htm](http://news.xinhuanet.com/english/business/2013-08/28/c_132670860.htm))
2. “Cambodia expects double growth in rice exports this year: minister” ([http://news.xinhuanet.com/english/world/2013-08/27/c\\_132667860.htm](http://news.xinhuanet.com/english/world/2013-08/27/c_132667860.htm))
3. “ADB lends 70 mln USD to Cambodia for rice commercialization, finance reforms” ([http://news.xinhuanet.com/english/business/2013-08/26/c\\_132663404.htm](http://news.xinhuanet.com/english/business/2013-08/26/c_132663404.htm))