



វិទ្យាស្ថានបណ្តុះបណ្តាល និង ស្រាវជ្រាវដើម្បីអភិវឌ្ឍន៍កម្ពុជា
**CDRI—Cambodia’s leading independent
development policy research institute**

របាយការណ៍ខ្លីៗស្តីពីសេដ្ឋកិច្ចកម្ពុជា
Flash Report on the Cambodian Economy

ធ្នូ ២០១២ / December 2012

វត្ត វឌ្ឍនា / Roth Vathana

ប៉ុន ដូរីណា / Pon Dorina

បកប្រែដោយ៖ យូ សិទ្ធិវិទូ និង ខេង សេង

ភ្នំពេញ កម្ពុជា

Phnom Penh, Cambodia

TO SUBSCRIBE, PLEASE CONTACT:

Office address: #56, Street 315, Tuol Kork, Phnom Penh, Cambodia; *postal address:* CDRI, PO Box 622 Phnom Penh, Cambodia;
tel: (855-23) 881-384/881-701/881-916/883-603 ; *fax:* (855-23) 880-734 ; *email:* pubs@cdri.org.kh; *website:* <http://www.cdri.org.kh>

ការបកស្រាយតារាងសំខាន់ៗ

Highlights

របាយការណ៍នេះ បកស្រាយពីស្ថានភាពសេដ្ឋកិច្ចមួយចំនួននៅកម្ពុជា និងបណ្តាប្រទេសដៃគូពាណិជ្ជកម្ម ដោយធ្វើការប្រៀបធៀបលទ្ធផលខុសគ្នាខ្លះៗនេះ ជាមួយនឹងខែមុនៗ។

This report highlights a number of economic indicators of Cambodia and its partners. It compares recent figures with those of earlier periods.

នៅខែតុលា ចំនួនភ្ញៀវបរទេសមកដល់សរុប កើន ១៩,៩% ធៀបនឹងខែមុន (២៤,៨% ធៀបនឹងឆ្នាំមុន)។ ភ្ញៀវមកលំហែ កើន ១៩% (២០,៤% ធៀបនឹងឆ្នាំមុន) ភ្ញៀវមកធ្វើជំនួញកើន ៣៤% (៤៧,៣% ធៀបនឹងឆ្នាំមុន) និង ភ្ញៀវមកក្នុងគោលបំណងផ្សេងៗកើន ១៩% (២៨៦,៤% ធៀបនឹងឆ្នាំមុន)។ នៅខែដដែល តម្លៃអនុម័តគម្រោងសាងសង់សរុបនៅភ្នំពេញ កើន ២៣២,៣% ធៀបនឹងខែមុន (៤៩,៥% ធៀបនឹងឆ្នាំមុន) ដល់ ១១១លានដុល្លារ។ តម្លៃអនុម័តភូមិគ្រឹះ និងផ្ទះកើន ២៤៧,៧% ធៀបនឹងខែមុន (ធ្លាក់ចុះ ៧១% ធៀបនឹងឆ្នាំមុន) ដល់ ១២,៩លានដុល្លារ និង តម្លៃអនុម័តផ្ទះល្វែង កើន ១៧,២% (ធ្លាក់ចុះ ៣៨,៦% ធៀបនឹងឆ្នាំមុន) ដល់ ១៣,៦លានដុល្លារ។

Total foreign visitor arrivals in October rose 19.9 percent from a month earlier (24.8 percent year on year). Holiday arrivals increased by 19 percent (20.4 percent year on year), business arrivals by 34 percent (47.3 percent year on year) and “other” arrivals by 19 percent (286.4 percent year on year). In the same month, the total value of construction approvals in Phnom Penh went up 232.3 percent from the preceding month (49.5 percent year on year) to USD111 m. The value of villa and house approvals increased by 247.7 percent from a month earlier (71 percent drop year on year) to USD12.9 m and of flats by 17.2 percent (38.6 percent decrease year on year) to USD13.6 m.

នៅខែតុលា ២០១២ សន្ទស្សន៍ថ្លៃទំនិញប្រើប្រាស់ (គ្រប់មុខទំនិញ) ធ្លាក់ចុះ ០,២% ធៀបនឹងខែមុន (កើន ១,២% ធៀបនឹងឆ្នាំមុន)។ ថ្លៃសម្លៀកបំពាក់ និងស្បែកជើងធ្លាក់ចុះ ០,៣% (កើន ៣,៣% ធៀបនឹងឆ្នាំមុន) និង ថ្លៃស្បែកនៅ និងទឹកភ្លើង ធ្លាក់ចុះ ០,៩% (កើន ២,២% ធៀបនឹងឆ្នាំមុន)។ ថ្លៃស្បៀងអាហារ និងភេសជ្ជៈគ្មានជាតិស្រាវនៅថេរ ប៉ុន្តែកើន ០,៦% បើធៀបនឹងឆ្នាំមុន។

In October, the consumer price index (all items) dropped by 0.2 percent from the previous month (1.2 percent increase year on year). Prices of clothing and footwear decreased by 0.3 percent (3.3 percent rise year on year) and of housing and utilities by 0.9 percent (2.2 percent increase year on year). Prices of food and non-alcoholic beverages remained unchanged, but year on year rose by 0.6 percent.

នៅខែវិច្ឆិកា ២០១២ ថ្លៃប្រេងម៉ាស៊ូត ធ្លាក់ចុះ ០,៣% ធៀបនឹងខែមុន (កើន ៤,៥% ធៀបនឹងឆ្នាំមុន) មកត្រឹម ៥១៣៦,៤រៀល/លីត្រ និង ថ្លៃប្រេងសាំង ធ្លាក់ចុះ ០,៩% (កើន ២,៩% ធៀបនឹងឆ្នាំមុន) មកត្រឹម ៥២៧៦,៤រៀល/លីត្រ។ នៅខែកញ្ញា អត្រាការប្រាក់លើបញ្ញើជាប្រាក់រៀលរយៈពេល ១២ខែ គឺ ៥,៩% ឬកើន ០,០៣៦ភាគរយ ធៀបនឹងខែមុន (០,៦% ធៀបនឹងឆ្នាំមុន) ហើយអត្រាលើបញ្ញើជាប្រាក់ដុល្លារនៅថេរ។ នៅខែវិច្ឆិកា ប្រាក់រៀល ឡើងថ្លៃ ០,៨% ធៀបនឹងខែមុន ទល់នឹងប្រាក់ដុល្លារ (១,៦% ធៀបនឹងឆ្នាំមុន) ០,៨% ទល់នឹងប្រាក់បាតថៃ (១,១% ធៀបនឹងឆ្នាំមុន) និង ០,៧% ទល់នឹងប្រាក់ដុងវៀតណាម (០,៩% ធៀបនឹងឆ្នាំមុន)។

The price of diesel fuel in November went down 0.3 percent from the preceding month (4.5 percent increase year on year) to KHR5136.4/litre and of gasoline 0.9 percent (2.9 percent rise year on year) to KHR5276.4/litre. In September, the interest rate on 12-month riel deposits was 5.9 percent, a 0.03 percentage point increase from a month earlier (0.6 percent year on year) and that on dollar deposits remained unchanged. In November, the riel appreciated 0.8 percent from a month earlier against the US dollar (1.6 percent year on year), 0.8 percent against the Thai baht (1.1 percent year on year), and 0.7 percent against the Vietnamese dong (0.9 percent year on year).

នៅខែតុលា ការនាំចូលសម្ភារៈសំណង់ កើន ៤០,១% ធៀបនឹងខែមុន (៨០,៧% ធៀបនឹងឆ្នាំមុន) ដល់ ៧,១លានដុល្លារ។ ការនាំចូលស៊ីម៉ង់ត៍ ធ្លាក់ចុះ ០,៣% ធៀបនឹងខែមុន ប៉ុន្តែកើន ៧៧,៣% ធៀបនឹងឆ្នាំមុន។ ការនាំចូលដែកថែប ធ្លាក់ចុះ ៤៦,៥% (២៣,៦% ធៀបនឹងឆ្នាំមុន) មកត្រឹម ៦,៣លានដុល្លារ។ ការនាំចូលប្រេងសាំង ធ្លាក់ចុះ ២,១% ធៀបនឹងខែមុន (១,៧% ធៀបនឹងឆ្នាំមុន) មកត្រឹម ២៥,៦លានដុល្លារ ហើយការនាំចូលប្រេងម៉ាស៊ូត ធ្លាក់ចុះ ២,៦% មកត្រឹម ៤៣,១លានដុល្លារ ប៉ុន្តែកើន ២៧,៧% ធៀបនឹងឆ្នាំមុន។ ការនាំចូលម៉ាស៊ូតខ្មៅ កើន ២១,១% ធៀបនឹងខែមុន (១៨,៤% ធៀបនឹងឆ្នាំមុន) ដល់ ៣,៦លានដុល្លារ។ នៅខែដដែល ការនាំចេញសម្លៀកបំពាក់ (គ្រប់ប្រភេទ) ធ្លាក់ចុះ ២១,៥% ធៀបនឹងខែមុន (៦,៧% ធៀបនឹងឆ្នាំមុន) មកត្រឹម ៣០២,១លានដុល្លារ ការនាំចេញស្បែកជើង ធ្លាក់ចុះ ៧,៤% (កើន ៦,១% ធៀបនឹងឆ្នាំមុន) មកត្រឹម ២០,៥លានដុល្លារ ហើយការនាំចេញផលិតផលវាយដំណូងផ្សេងទៀតធ្លាក់ចុះ ៥,០% (១៤,២% ធៀបនឹងឆ្នាំមុន) មកត្រឹម ៥,៣លានដុល្លារ។

Imports of construction equipment in October rose by 40.1 percent from the preceding month (80.7 percent year on year) to USD7.1 m. Imports of cement dropped by 0.3 percent from a month earlier, but year on year increased 77.3 percent. Imports of steel declined by 46.5 percent (23.6 percent year on year) to USD6.3 m. Imports of gasoline decreased by 2.1 percent from the previous month (1.7 percent year on year) to USD25.6 m and of diesel by 2.6 percent to USD43.1 m, but year on year rose 27.7 percent. Imports of fuel oil went up 21.1 percent from a month earlier (18.4 percent year on year) to USD3.6 m. In the same month, exports of clothing (all kinds) went down 21.5 percent from a month earlier (6.7 percent year on year) to USD302.1 m, of shoes by 7.4 percent (6.1 percent rise year on year) to USD20.5 m and of other textile products by 5.0 percent (14.2 percent increase year on year) to USD5.3 m.

នៅខែកញ្ញា ចំណូលចរន្តសរុបរបស់រដ្ឋាភិបាលធ្លាក់ចុះ ១,១% ធៀបនឹងខែមុន មកត្រឹម ៥៨៦,៩ពាន់លានរៀល ប៉ុន្តែកើន ២៤,២% ធៀបនឹងឆ្នាំមុន។ ចំណូលពន្ធក្នុងស្រុក មានចំណែក ៦៥% នៃចំណូលសរុប និងធ្លាក់ចុះ ៥,៥% ធៀបនឹងខែមុន (កើន ១៩,៥% ធៀបនឹងឆ្នាំមុន) មកត្រឹម ៣៨១,៦ពាន់លានរៀល រីឯចំណូលពីពន្ធនាំចូលនិងនាំចេញ ធ្លាក់ចុះ ១,៥% (កើន ៣,៤% ធៀបនឹងឆ្នាំមុន) មកត្រឹម ១០៥ពាន់លានរៀល។ ចំណូលមិនមែនពន្ធ កើន ២១,១% ធៀបនឹងខែមុន (៩៣,៥% ធៀបនឹងឆ្នាំមុន) ដល់ ១០០,២ពាន់លានរៀល។

In September, total government current revenue declined 1.1 percent from a month earlier to KHR586.9 bn, but year on year rose by 24.2 percent. Revenue from domestic taxes, which accounts for 65 percent of the total revenue, decreased by 5.5 percent (19.5 percent rise year on year) to KHR381.6 bn and from import and export taxes by 1.5 percent (3.4 percent increase year on year) to KHR105 bn. Non-tax revenue went up 21.1 percent from the preceding month (93.5 percent year on year) to KHR100.2 bn. Total current expenditure dropped 33.9 percent from a month

ចំណាយចរន្តសរុបរបស់រដ្ឋាភិបាល ធ្លាក់ចុះ ៣៣,៩% ធៀបនឹងខែមុន (២៨,៥% ធៀបនឹងឆ្នាំមុន) មកត្រឹម ៣៤៤,២ពាន់លានរៀល។ ចំណាយលើរៀបចំការងារ (៣២,៩% នៃចំណាយសរុប) ធ្លាក់ចុះ ៥៤,៥% ធៀបនឹងខែមុន (៤៣,៥% ធៀបនឹងឆ្នាំមុន) មកត្រឹម ១១៣,១ពាន់លានរៀល រីឯចំណាយលើខុបត្តមុន និងជំនួយសង្គមកិច្ច ធ្លាក់ចុះ ២២,៦% (៣៣% ធៀបនឹងឆ្នាំមុន) មកត្រឹម ៧១,៩ពាន់លានរៀល ហើយចំណាយលើសេវាដទៃទៀត ធ្លាក់ចុះ ១១,១% (៨,៣% ធៀបនឹងឆ្នាំមុន)។

នៅខែតុលា អង្ករថៃ ឡើងថ្លៃ ០,៧% ធៀបនឹងខែមុន (៦,៥% ធៀបនឹងឆ្នាំមុន) ដល់ ៦៧៧,៨ដុល្លារ/តោន។ កៅស៊ូថៃ ធ្លាក់ថ្លៃ ៧,៣% ធៀបនឹងខែមុន (៣៥,៥% ធៀបនឹងឆ្នាំមុន) មកត្រឹម ២៦០៦,៩ដុល្លារ/តោន និងម្សៅដំឡូងលើ ធ្លាក់ថ្លៃ ៥,៥% (១០,០% ធៀបនឹងឆ្នាំមុន) មកត្រឹម ៣០៧,៣ដុល្លារ/តោន។ នៅខែដដែល អង្ករវៀតណាម ឡើងថ្លៃ ៥,៥% ធៀបនឹងខែមុន (ធ្លាក់ថ្លៃ ១៦,៨% ធៀបនឹងឆ្នាំមុន) ដល់ ៤៧៧,៩ដុល្លារ/តោន ហើយ កៅស៊ូ ឡើងថ្លៃ ៧,៧% (២៧,៩% ធៀបនឹងឆ្នាំមុន) ដល់ ២៦៩៧,៩ដុល្លារ/តោន។ គ្រាប់ស្វាយចន្ទី ធ្លាក់ថ្លៃ ១,៣% (២៦,១% ធៀបនឹងឆ្នាំមុន) មកត្រឹម ៦៣៦៣,៦ដុល្លារ/តោន។ នៅខែតុលា ការនាំចេញអង្ករថៃ កើន ១០២,៩% ធៀបនឹងខែមុន (២៩,២% ធៀបនឹងឆ្នាំមុន) ដល់ ៥៩០,៦លានដុល្លារ ហើយការនាំចេញម្សៅដំឡូងលើ កើន ៧៧,៤% (៣៩,២% ធៀបនឹងឆ្នាំមុន) ដល់ ២១៣,៩លានដុល្លារ។ ការនាំចេញកៅស៊ូធម្មជាតិ និងជំរុញធម្មជាតិ កើន ៤,០% ធៀបនឹងខែមុន ដល់ ៦៦៧,៩លានដុល្លារ ប៉ុន្តែធ្លាក់ចុះ ៤០,១% ធៀបនឹងឆ្នាំមុន។ នៅខែដដែល ការនាំចេញអង្ករវៀតណាមកើន ៣,០% ធៀបនឹងខែមុន (២១,៤% ធៀបនឹងឆ្នាំមុន) ដល់ ៣១៦លានដុល្លារ។ ការនាំចេញកៅស៊ូ ធ្លាក់ចុះ ៥,១% (កើន ១១,៦% ធៀបនឹងឆ្នាំមុន) មកត្រឹម ២៥៩លានដុល្លារ។

នៅខែតុលា ការនាំចេញរបស់សហរដ្ឋអាមេរិក ធ្លាក់ចុះ ៤,៨% ធៀបនឹងខែមុន (០,៣% ធៀបនឹងឆ្នាំមុន) មកត្រឹម ១២៧,៥ពាន់លានដុល្លារ ហើយការនាំចេញរបស់ជប៉ុន ធ្លាក់ចុះ ៣,៦% (៨,៤% ធៀបនឹងឆ្នាំមុន) មកត្រឹម ៦៥,៨ពាន់លានដុល្លារ។ ការនាំចេញរបស់តំបន់អឺរ៉ុប ធ្លាក់ចុះ ០,៣% ធៀបនឹងខែមុន មកត្រឹម ២០២,៦ពាន់លានដុល្លារ ប៉ុន្តែកើន ២,៨% ធៀបនឹងឆ្នាំមុន។ នៅខែដដែល ការនាំចេញរបស់ថៃ កើន ២,៨% ធៀបនឹងខែមុន ដល់ ២០,១ពាន់លានដុល្លារ ប៉ុន្តែធ្លាក់ចុះ ០,៩% ធៀបនឹងឆ្នាំមុន ហើយ ការនាំចូលធ្លាក់ចុះ ៣,១% ធៀបនឹងខែមុន មកត្រឹម ១៦,៩ពាន់លានដុល្លារ ប៉ុន្តែកើន ៥,៣% ធៀបនឹងឆ្នាំមុន។

នៅខែវិច្ឆិកា អង្ករ USA 2/4 ឡើងថ្លៃ ១,៣% ធៀបនឹងខែមុន (២,៥% ធៀបនឹងឆ្នាំមុន) ដល់ ៦០៨ដុល្លារ/តោន។ អង្ករថៃ 100%B ឡើងថ្លៃ ០,៧% ដល់ ៥៩៨ដុល្លារ/តោន ប៉ុន្តែធ្លាក់ថ្លៃ ៥,១% ធៀបនឹងឆ្នាំមុន។ ពោត (US No.2) ឡើងថ្លៃ ០,៧% (១៥,២% ធៀបនឹងឆ្នាំមុន) ដល់ ៣២២,៧ដុល្លារ/តោន។ សណ្តែកសៀង (US No.1) ធ្លាក់ថ្លៃ ៥,២% ធៀបនឹងខែមុន មកត្រឹម ៥៦៤,២ដុល្លារ/តោន ប៉ុន្តែឡើងថ្លៃ ៣២% ធៀបនឹងឆ្នាំមុន។ កៅស៊ូ SMR 5 ធ្លាក់ថ្លៃ ៥,២% (១២,២% ធៀបនឹងឆ្នាំមុន) មកត្រឹម ២៥៨៧,៥ដុល្លារ/តោន។ សាំង (US Gulf Coast) ធ្លាក់ថ្លៃ ៩,២% ធៀបនឹងខែមុន (០,៧% ធៀបនឹងឆ្នាំមុន) មកត្រឹម ០,៦៦ដុល្លារ/លីត្រ ហើយប្រេងថ្នាំស្លឹក (Low sulphur No. 2) ធ្លាក់ថ្លៃ ៥,១% (ឡើងថ្លៃ ១,៦% ធៀបនឹងឆ្នាំមុន) មកត្រឹម ០,៧៩ដុល្លារ/លីត្រ។

earlier (28.5 percent year on year) to KHR344.2 bn. Expenditure on wages (accounting for 32.9 percent of the total) decreased by 54.5 percent from the previous month (43.5 percent year on year) to KHR113.1 bn, on subsidies and social assistance by 22.6 percent (33 percent year on year) to KHR71.9 bn and on other services by 11.1 percent (8.3 percent year on year).

The Thai rice price in October increased 0.7 percent from the preceding month (6.5 percent year on year) to USD677.8/tonne. Prices of Thai rubber dropped 7.3 percent from a month earlier (35.5 percent year on year) to USD2606.9/tonne and of tapioca by 5.5 percent (10.0 percent year on year) to USD307.3/tonne. In the same period, the price of Vietnamese rice increased by 5.5 percent from the preceding month (16.8 percent drop year on year) to USD474.9/tonne and of rubber by 7.7 percent (27.9 percent increase year on year) to USD2697.9/tonne. The price of cashew nuts declined 1.3 percent (26.1 percent year on year) to USD6363.6/tonne. In October, exports of Thai rice increased 102.9 percent from a month earlier (29.2 percent year on year) to USD590.6 m and of tapioca by 77.4 percent (39.2 percent year on year) to USD213.9 m. Exports of natural rubber and similar natural gums increased 4 percent from the preceding month, but year on year declined by 40.1 percent to USD667.9 m. In the same month, Vietnamese rice exports rose 3.0 percent from the previous month (21.4 percent year on year) to USD312 m. Exports of rubber dropped 5.1 percent (11.6 percent rise year on year) to USD259 m.

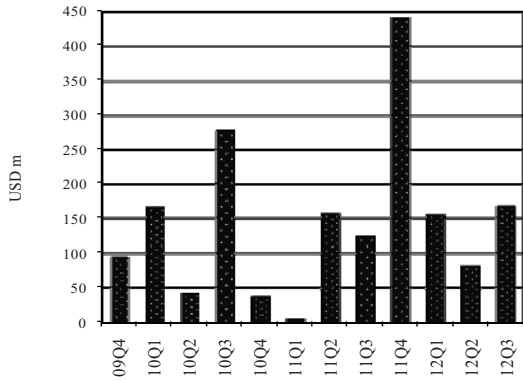
In October, US exports went down 4.8 percent from a month earlier (0.3 percent year on year) to USD127.5 bn and of Japan 3.6 percent (8.4 percent year on year) to USD65.8 bn. Exports of the euro zone decreased by 0.3 percent from the preceding month to USD202.6 bn, but year on year rose 2.8 percent. In the same month, Malaysian exports increased by 2.8 percent from the preceding month to USD20.1 bn, but year on year dropped 0.9 percent. Imports decreased by 3.1 percent from a month earlier to USD16.9 bn, but year on year rose 5.3 percent.

In November, the price of USA 2/4 rice went up 1.3 percent from the preceding month (2.5 percent year on year) to USD608/tonne. The price of Thai 100 percent B rice increased 0.7 percent to USD598/tonne, but year on year dropped 5.1 percent. The price of maize (US No. 2) increased 0.7 percent (15.2 percent year on year) to USD322.7/tonne. The price of soybeans (US No. 1) dropped by 5.2 percent from a month earlier to USD564.2/tonne, but year on year increased 32 percent. Rubber's price (SMR 5) went down 5.2 percent (12.2 percent year on year) to USD2587.5/tonne. In November, the price of gasoline (US Gulf Coast) decreased 9.2 percent from the previous month (0.7 percent year on year) to USD0.66/litre and that of diesel fuel (low sulphur No. 2) by 5.1 percent (1.6 percent increase year on year) to USD0.79/litre.

សកម្មភាពសេដ្ឋកិច្ចសំខាន់ៗ និង ថ្លៃទំនិញនៅកម្ពុជា

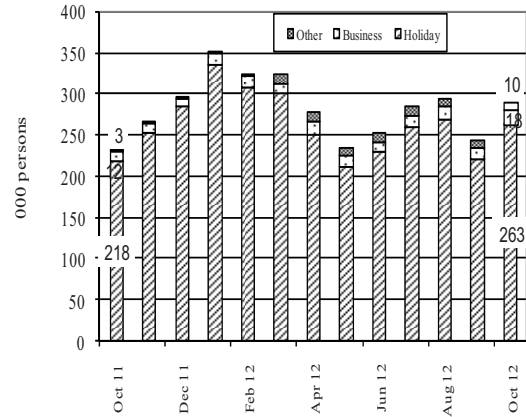
Main Economic Activities and Consumer Prices in Cambodia

Fixed Asset Investment Approvals by CDC*
Agriculture
2009 Q4–2012 Q3



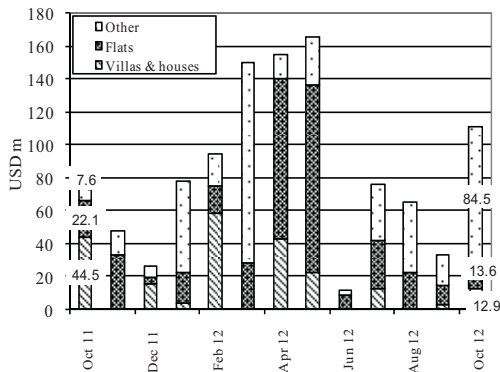
*Including expansion projects.
Source: Council for the Development of Cambodia

Foreign Visitor Arrivals
October 2011– October 2012



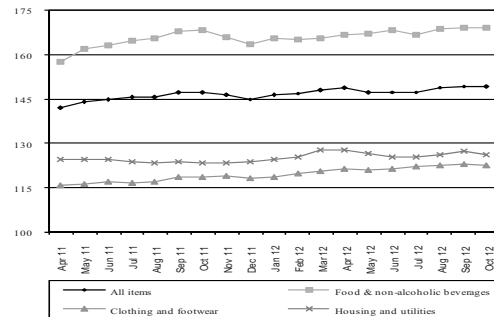
Source: Ministry of Tourism

Phnom Penh: Value of Construction Approvals
October 2011– October 2012



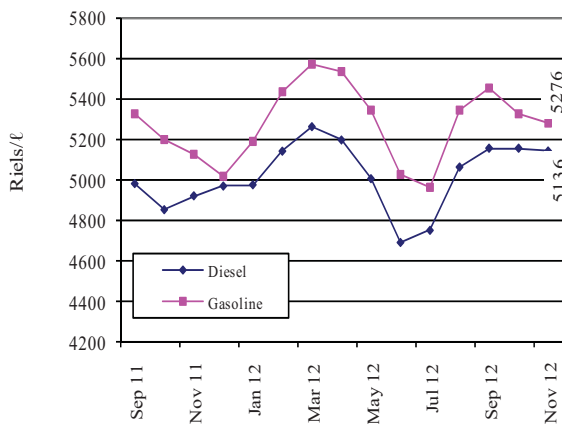
Source: Municipality of Phnom Penh

Consumer Price Index
(December 2006=100)
April 2011–October 2012



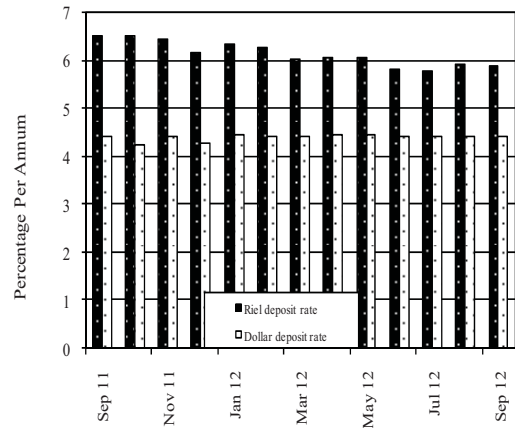
Source: National Institute of Statistics

Phnom Penh: Gasoline & Diesel Prices
September 2011–November 2012



Source: CDRI

Interest Rates on 12-Month Bank Deposits (%)
September 2011– September 2012

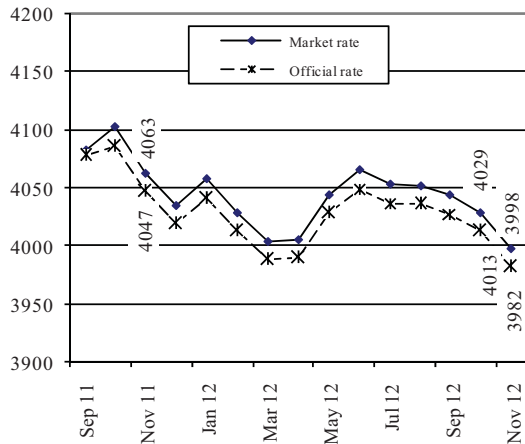


Source: Economic & Monetary Statistics, NBC

ស្ថានភាពអត្រាប្តូរទ្រព្យ និង ជំនួយអតិថិជនស្តីពីក្រៅប្រទេស

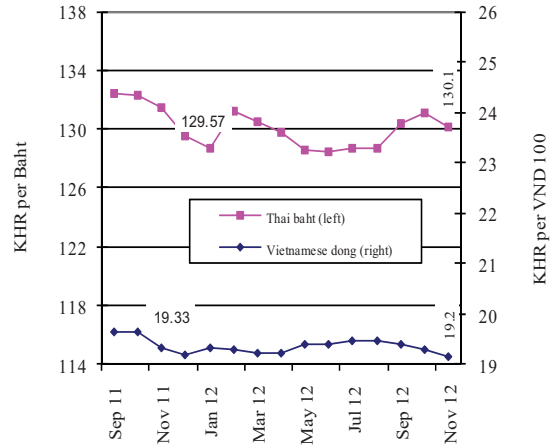
Exchange Rates, Money and Credit

Riels per US Dollar
September 2011–November 2012



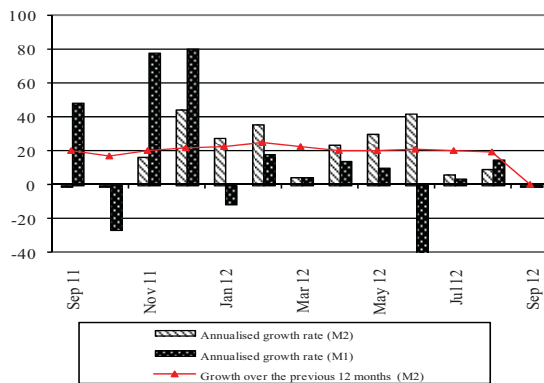
Source: National Bank of Cambodia

Riels per THB & VND
September 2011–November 2012



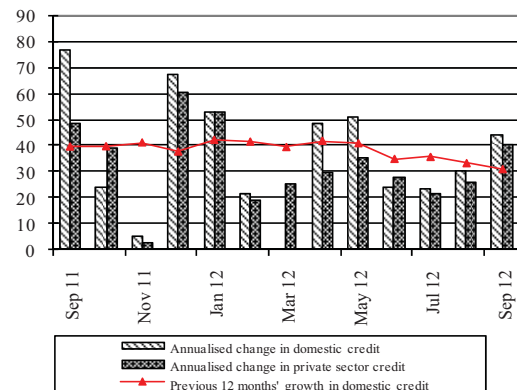
Source: National Bank of Cambodia

Monetary Survey (%)
September 2011– September 2012



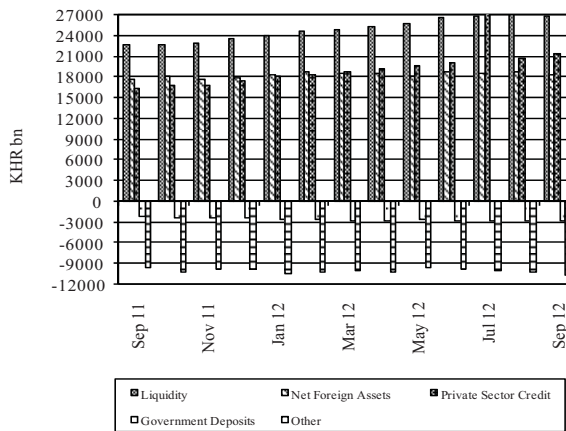
Source: National Bank of Cambodia

Domestic Credit (%)
September 2011– September 2012



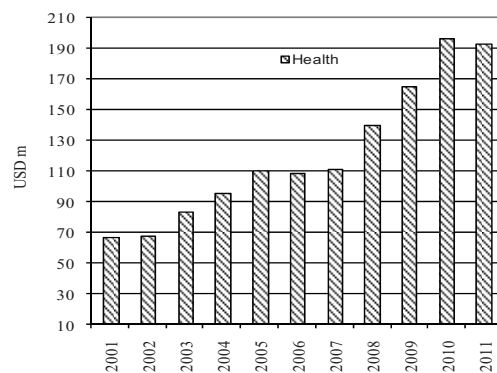
Source: National Bank of Cambodia

Monetary Survey
September 2011–September 2012



Source: National Bank of Cambodia

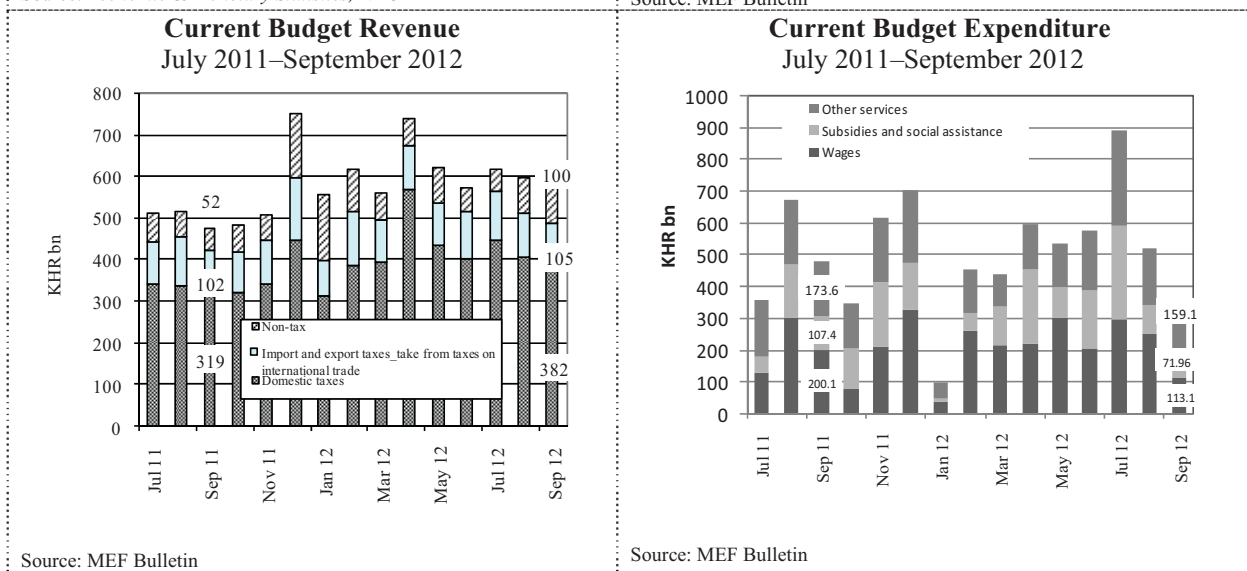
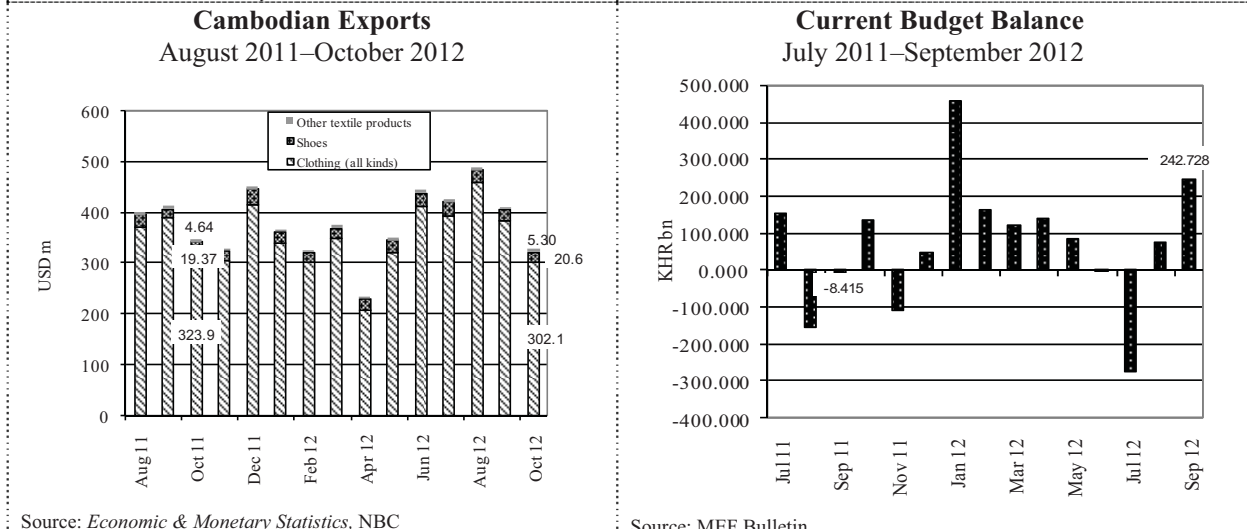
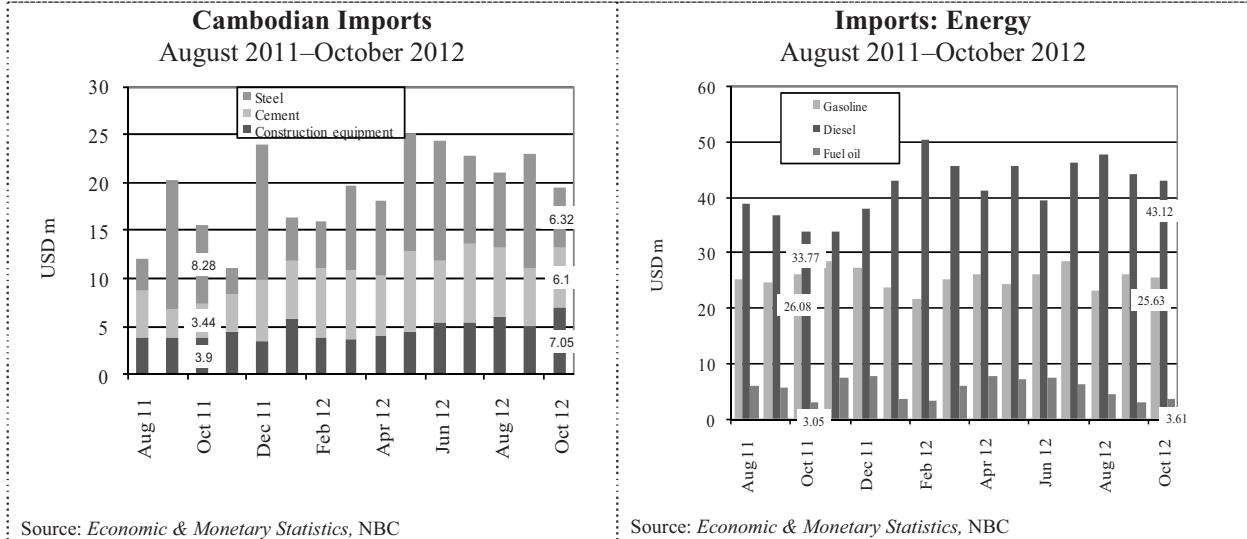
External Development Assistance Disbursement
Health
2001–11



Source: The Cambodia Development Effectiveness Report 2011, CDC

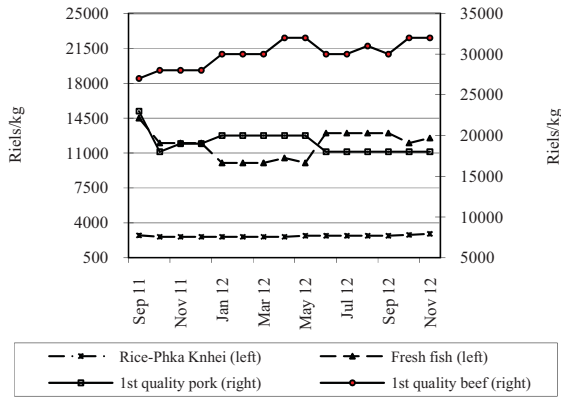
ពាណិជ្ជកម្មក្រៅប្រទេស និង ការអនុវត្តថវិកាជាតិ

External Trade and National Budget Operations



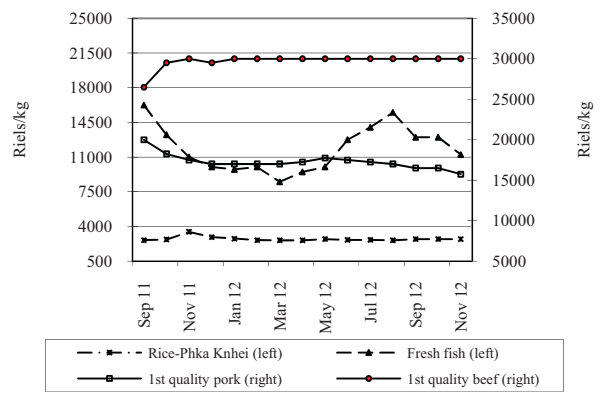
ផ្លូវស្បៀងអាហារតាមខេត្តក្នុងប្រទេសកម្ពុជា
Provincial Food Prices

Food Prices in Siem Reap Province
 September 2011–November 2012



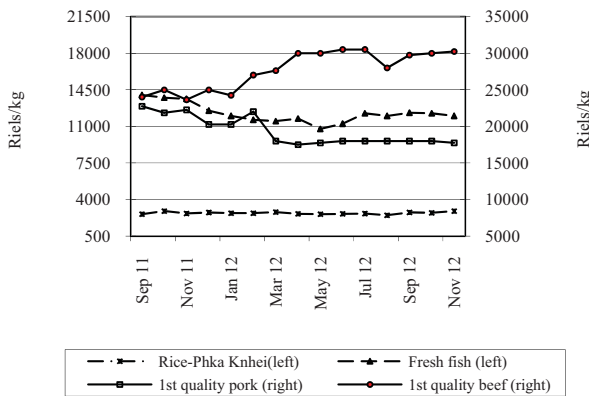
Source: CDRI

Food Prices in Battambang Province
 September 2011–November 2012



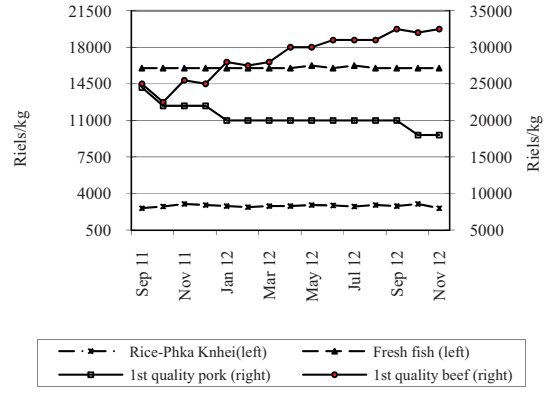
Source: CDRI

Food Prices in Kompong Cham Province
 September 2011–November 2012



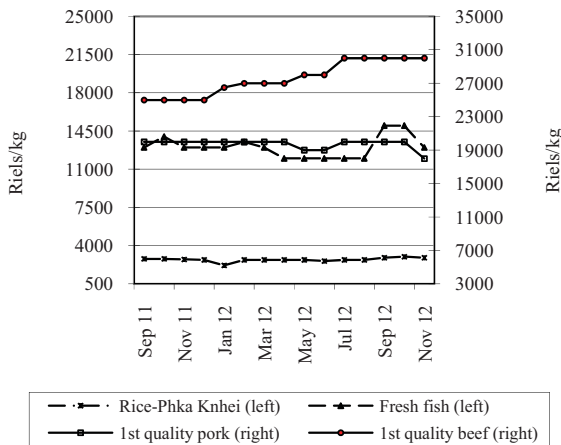
Source: CDRI

Food Prices in Kampot Province
 September 2011–November 2012



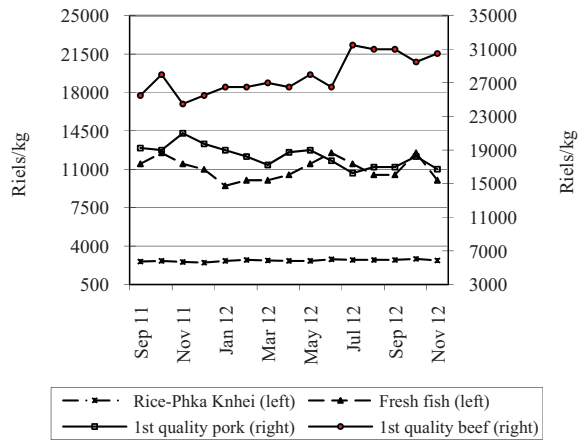
Source: CDRI

Food Prices in Svay Rieng Province
 September 2011–November 2012



Source: CDRI

Food Prices in Kompong Speu Province
 September 2011–November 2012

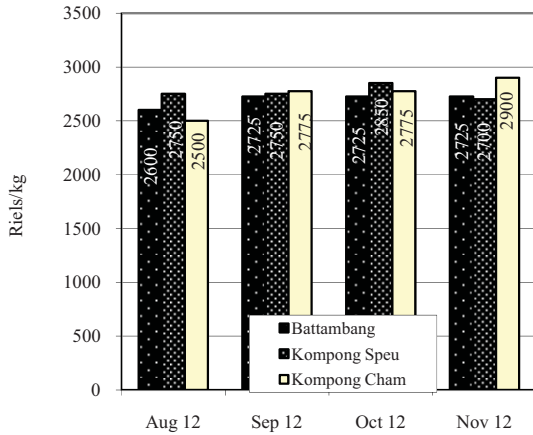


Source: CDRI

តម្លៃទំនិញតាមខេត្តក្នុងប្រទេសកម្ពុជា: តាមមូលដ្ឋាន

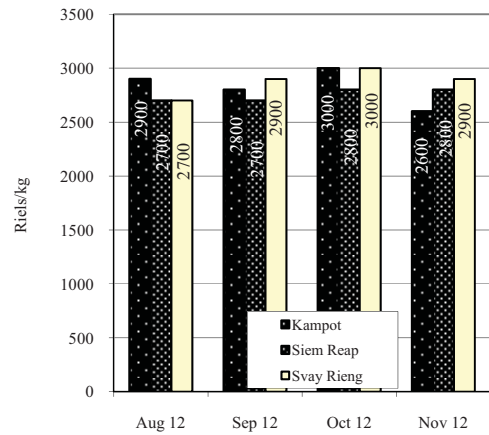
Provincial Goods Prices in Cambodia

Cambodia: Rice Prices in Three Provinces



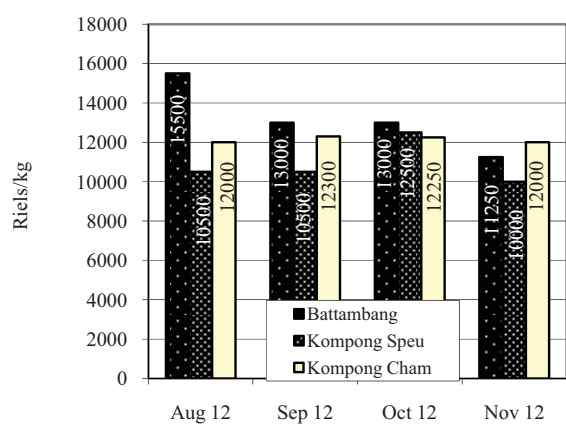
Source: CDRI

Cambodia: Rice Prices in Three Provinces



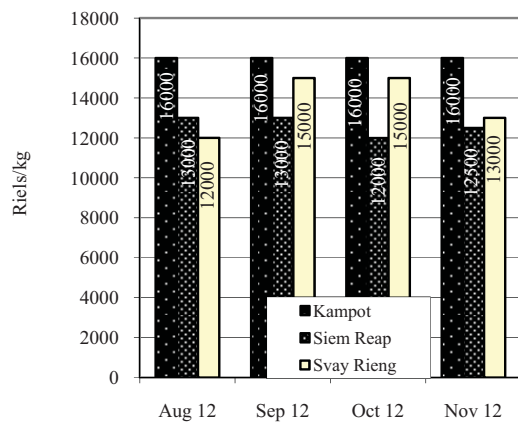
Source: CDRI

Cambodia: Fish Prices in Three Provinces



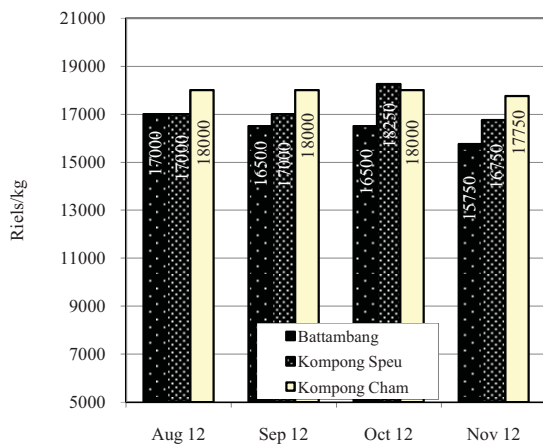
Source: CDRI

Cambodia: Fish Prices in Three Provinces



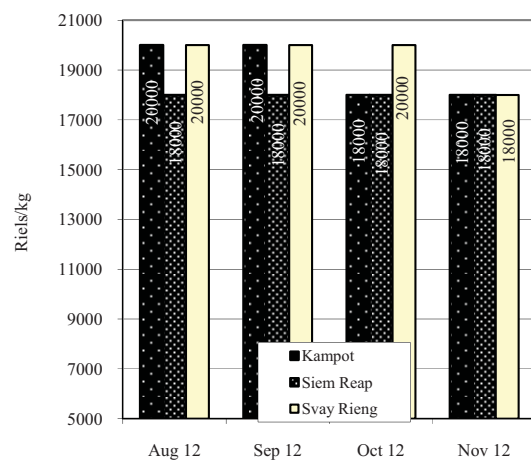
Source: CDRI

Cambodia: Pork Prices in Three Provinces



Source: CDRI

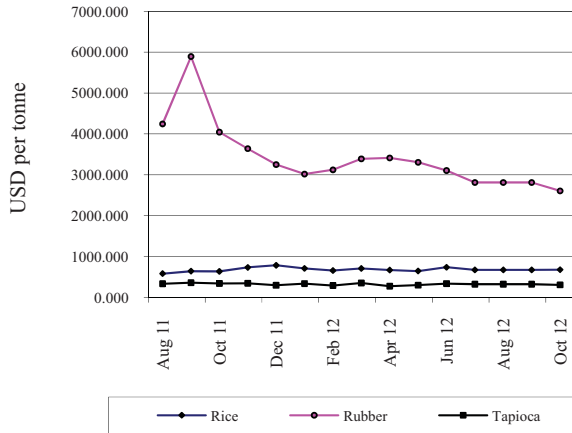
Cambodia: Pork Prices in Three Provinces



Source: CDRI

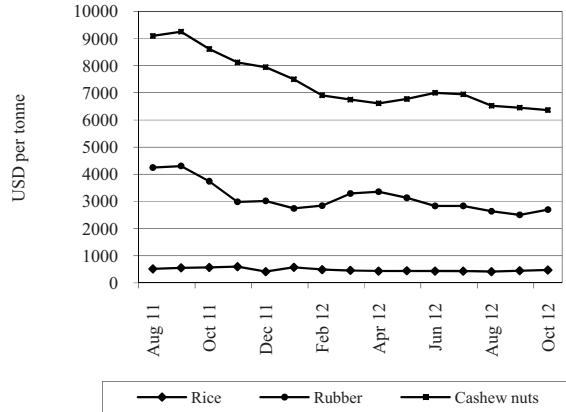
ផ្ទៃដំណើរ ការសំបេញ និង ចំនួនទេសចរអន្តរជាតិនៅក្នុងប្រទេសជាដៃគូរបស់កម្ពុជា
Goods Prices, Exports and International Tourist Arrivals to Partners of Cambodia

Thailand: Prices of Rubber, Rice and Tapioca
August 2011–October 2012



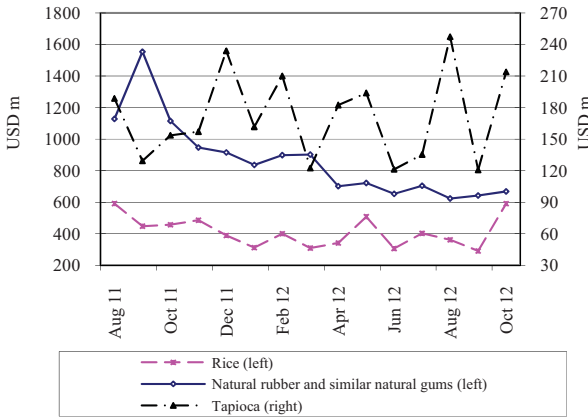
Source: Bank of Thailand, *Foreign Trade and Balance of Payments*

Vietnam: Prices of Rubber, Rice and Cashew Nuts
August 2011–October 2012



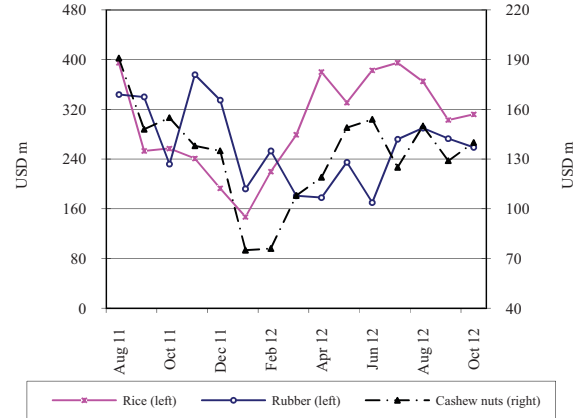
Source: General Statistics Office of Vietnam

Thailand: Exports
August 2011–October 2012



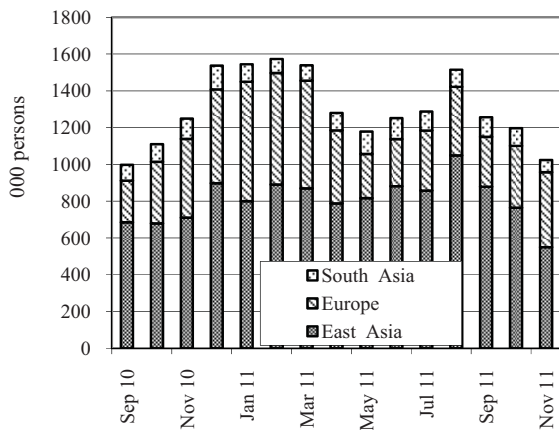
Source: Customs Department of Thailand

Vietnam: Exports
August 2011–October 2012



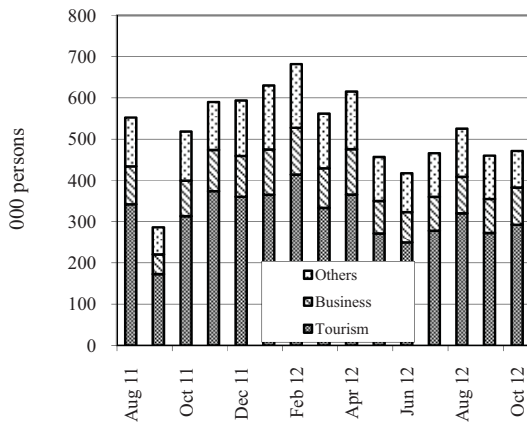
Source: General Statistics Office of Vietnam

Thailand: International Arrivals
September 2010–November 2011



Source: Thailand Office of Tourism Development

Vietnam: International Arrivals
August 2011–October 2012

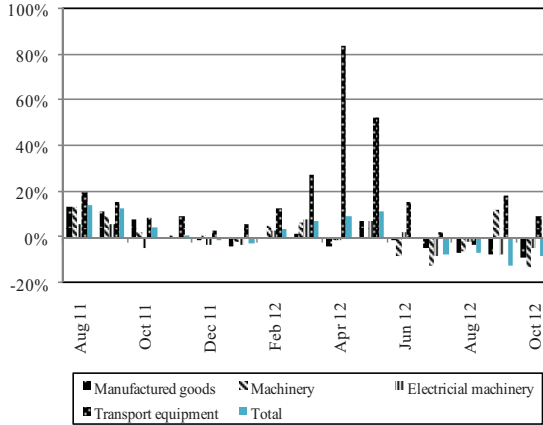


Source: Estimates by General Statistics Office of Vietnam

សកម្មភាពសេដ្ឋកិច្ច និង អត្រាអតិផរណានៅបណ្តាប្រទេសជាដៃគូរបស់កម្ពុជា

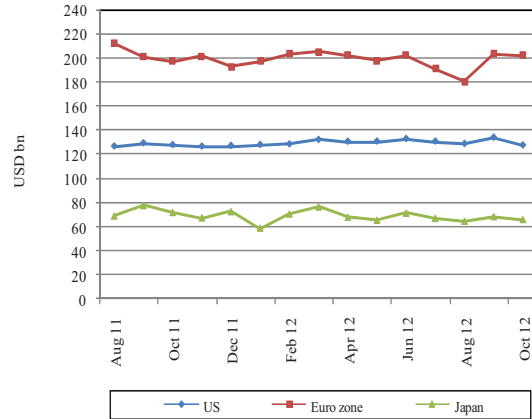
Economic Activity and Inflation Rates of Selected Economic Partners of Cambodia

Year-on-Year Growth of Main Exports: Japan
August 2011–October 2012



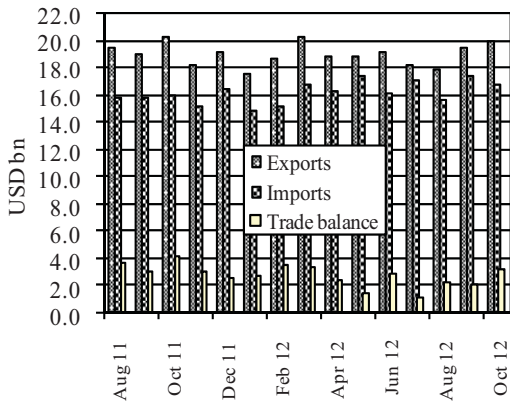
Source: Japanese Trade and Investment Statistics

Goods Exports: US, Euro Zone & Japan
August 2011–October 2012



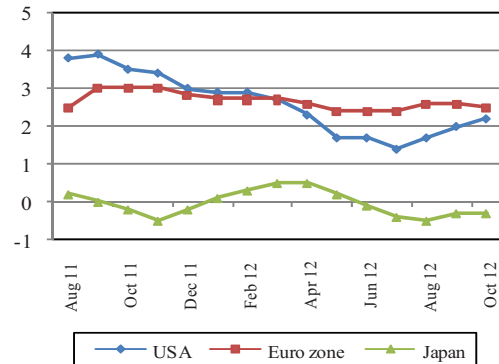
Sources: BEA, Eurostat and OECD

External Trade: Malaysia
August 2011–October 2012



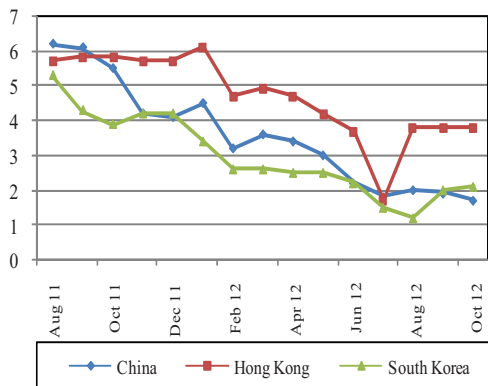
Source: Ministry of International Trade and Industry, Malaysia

Inflation Rates: US, Euro Zone & Japan
(percent price change from a year earlier)
August 2011–October 2012



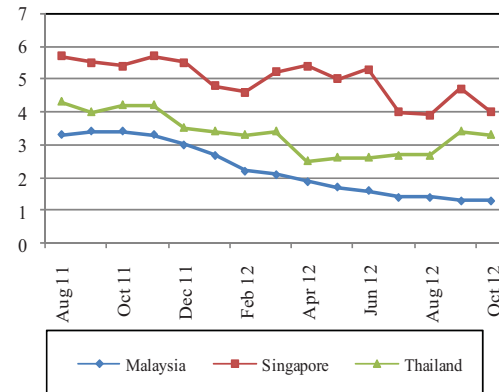
Sources: IMF and Economist (14 Dec 2012)

Inflation Rates: China, Hong Kong & South Korea
(percent price change from a year earlier)
August 2011–October 2012



Sources: IMF and Economist (14 Dec 2012)

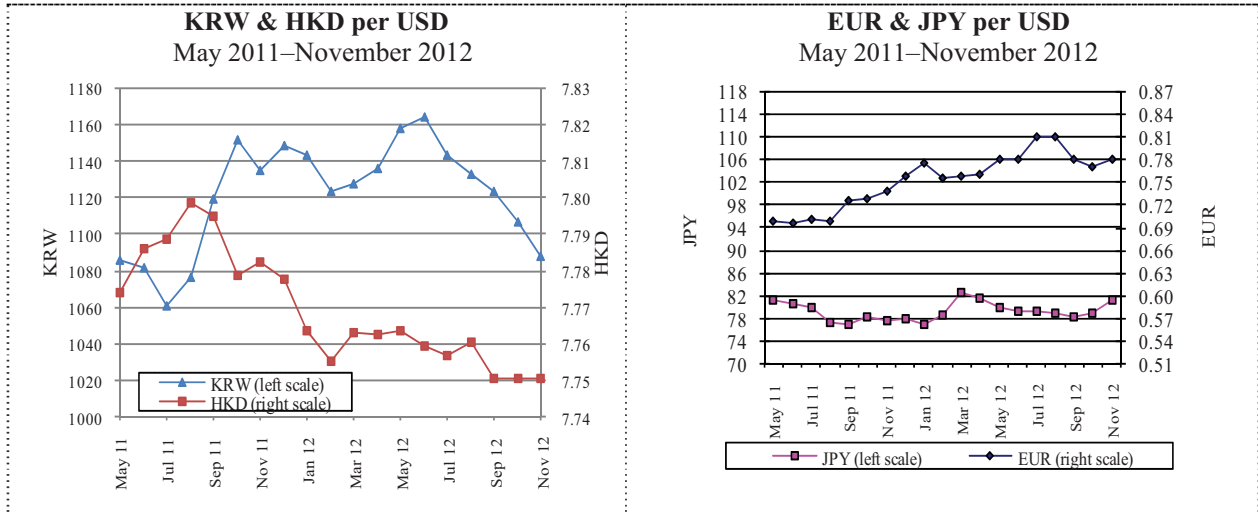
Inflation Rates: Selected ASEAN Countries
(percent price change from a year earlier)
August 2011–October 2012



Sources: IMF and Economist (14 Dec 2012)

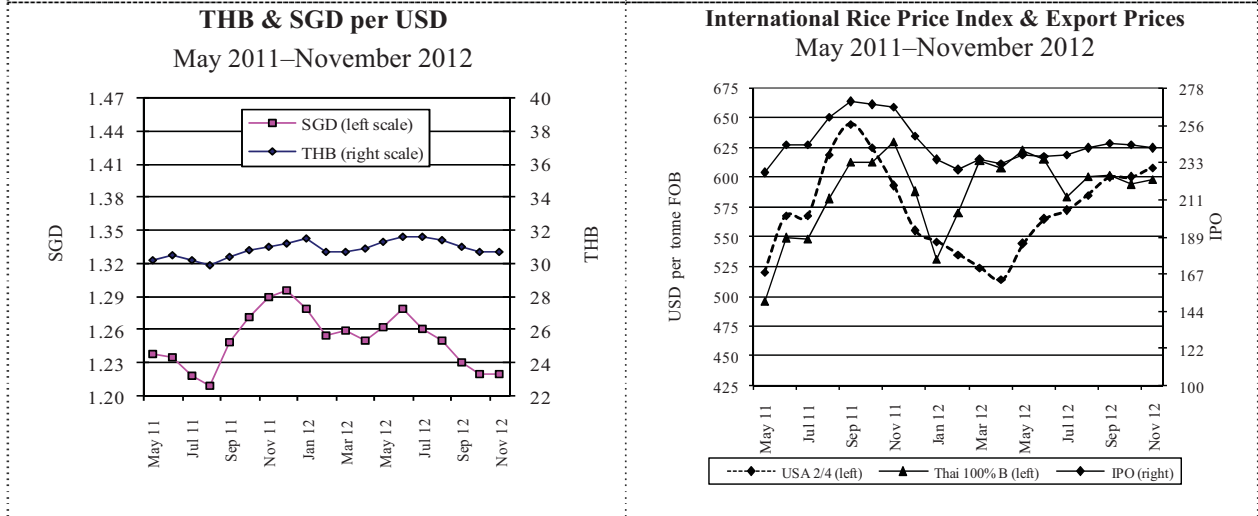
អត្រាប្តូរប្រាក់ និង គ្រួសារទំនិញសំខាន់ៗនៅទីផ្សារអន្តរជាតិ

Exchange Rates and Commodity Prices in World Markets



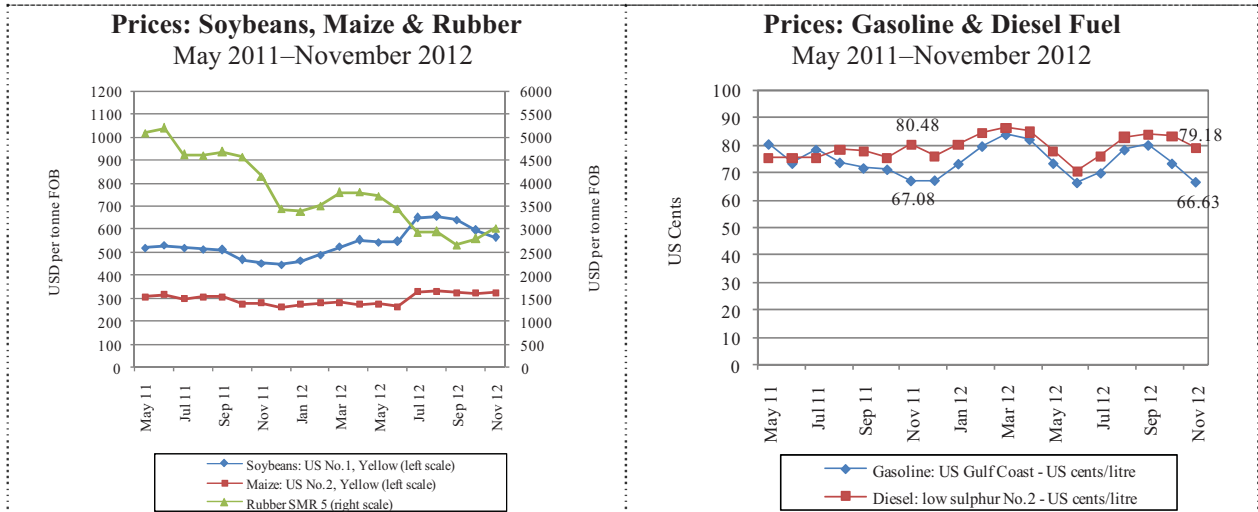
Source: Federal Reserve Bank of New York

Source: Federal Reserve Bank of New York



Source: Federal Reserve Bank of New York

Sources: Osiriz/InfoArroz



Source: Food and Agriculture Organisation

Source: US Energy Information Administration

ព័ត៌មានសេដ្ឋកិច្ច

Economic News

ព័ត៌មានសេដ្ឋកិច្ចសំខាន់ៗ

ឱនភាពពាណិជ្ជកម្មកម្ពុជា ធ្លាក់ចុះ ១៣,៦% ក្នុងរយៈពេល ១១ខែ ដើមឆ្នាំ២០១២

ទិន្នន័យក្រសួងសេដ្ឋកិច្ច និងហិរញ្ញវត្ថុ បង្ហាញថា ឱនភាពពាណិជ្ជកម្មកម្ពុជា បានធ្លាក់ចុះ ១៣,៦% ក្នុងរយៈពេល ១១ខែ ដើមឆ្នាំ២០១២ បើធៀបនឹងអំឡុងពេលដូចគ្នាក្នុងឆ្នាំមុន ដោយសារ ការនាំចេញ បានកើន ២៦,៨% ឯការនាំចូល កើនត្រឹម ១៧%។

ការនាំចូលសរុប កើនដល់ ៦,៧ពាន់លានដុល្លារ ក្នុងនោះ ការនាំចូលផលិតផលផ្សេងៗ រួមចំណែក ២៧,១% បន្ទាប់មកមាន ការនាំចូលក្រណាត់ (២៩%) ម៉ាស៊ីន(៧,៣%) សាំង(៤,១%) និង រថយន្ត(២,៧%)។ ការនាំចូលក្រណាត់ កើន ២១,៦% ធៀបនឹង មួយឆ្នាំមុន ដល់ ១,៩ពាន់លានដុល្លារ។ ការនាំចូល សម្លៀកបំពាក់ប្រើហើយ កើន ១៨,៦% ដល់ ៧១លានដុល្លារ ឯការនាំចូលសម្លៀកបំពាក់ថ្មី កើន ១០៦% ដល់ ២លានដុល្លារ ហើយការនាំចូលរថយន្ត កើន ២៤,៣% ដល់ ១៨៦លានដុល្លារ។ ការនាំចូលឱសថ និង បារី កើន ១៥,២% និង ៣៣,៤% រៀងគ្នា។ ការនាំចូលស្រាបៀរ ធ្លាក់ចុះ ៤០,៨% ហើយការនាំចូលស្រា ធ្លាក់ចុះ ៩,៥%។

នៅអំឡុងពេលដដែលនេះដែរ ការនាំចេញ កើនដល់ ៥,៥ពាន់លានដុល្លារ។ ការនាំចេញសម្លៀកបំពាក់ (គ្រប់ប្រភេទ) ស្បែកជើង និងផលិតផលវាយនភ័ណ្ឌដទៃទៀត រួមចំណែក ៨២,៦% នៃតម្លៃនាំចេញសរុប ហើយបន្ទាប់មកមាន ការនាំចេញ កៅស៊ូ(២,៩%) និង អង្ករ(២,៣%)។ ការនាំចេញទៅសហរដ្ឋ អាមេរិក រួមចំណែក ៣៧,២% បន្ទាប់មកទៀតគឺ ការនាំចេញ ទៅតំបន់អឺរ៉ុប(៣២%) ទៅប្រទេសជប៉ុន(២០,៤%) ទៅប្រទេស អាស៊ាន(៧,០%) និង ទៅជប៉ុន(៣,៤%)។

Economic News Highlights

Cambodia’s trade deficit drops 13.6 percent in eleven months of 2012

Cambodia’s trade deficit declined 13.6 percent in the first 11 months of 2012 from the same period last year, according to data of the Ministry of Finance and Economy. The drop was attributable to exports increasing by 26.8 percent while imports rose by 17.0 percent.

Total imports increased to USD6.7 bn. Imports of other products accounted for 37.1 percent, followed by fabric (29 percent), diesel fuel (7.3 percent), gasoline (4.1 percent) and cars (2.7 percent). Imports of fabric increased by 21.6 percent year on year to USD1.9 bn, of garments (second hand) by 18.6 percent to USD71 m, of new garments by 106 percent to USD2 m and of cars by 24.3 percent to USD186 m. Imports of medicine and cigarettes rose by 15.2 and 33.4 percent, respectively. Imports of beer declined 40.8 percent and of alcohol by 9.5 percent.

In the same period, exports went up to USD5.5 bn. Exports of clothing (all kinds), shoes and other textile products accounted for 82.6 percent of the total value, followed by rubber (2.9 percent) and rice (2.3 percent). Exports to the US accounted for 37.2 percent, followed by the EU (32 percent), other countries (20.4 percent), ASEAN (7.0 percent) and Japan (3.4 percent).

Links to others economic news

1. “ADB announces 3-year pipeline to boost development in Cambodia”
http://news.xinhuanet.com/english/world/2012-12/18/c_132048224.htm
2. “Cambodia officially announces rice exporters federation”
http://news.xinhuanet.com/english/business/2012-12/15/c_132043091.htm